

EYE-NET

ROAD SAFETY FOR EVERYONE

Next-Gen Smart Collision Prevention Solutions



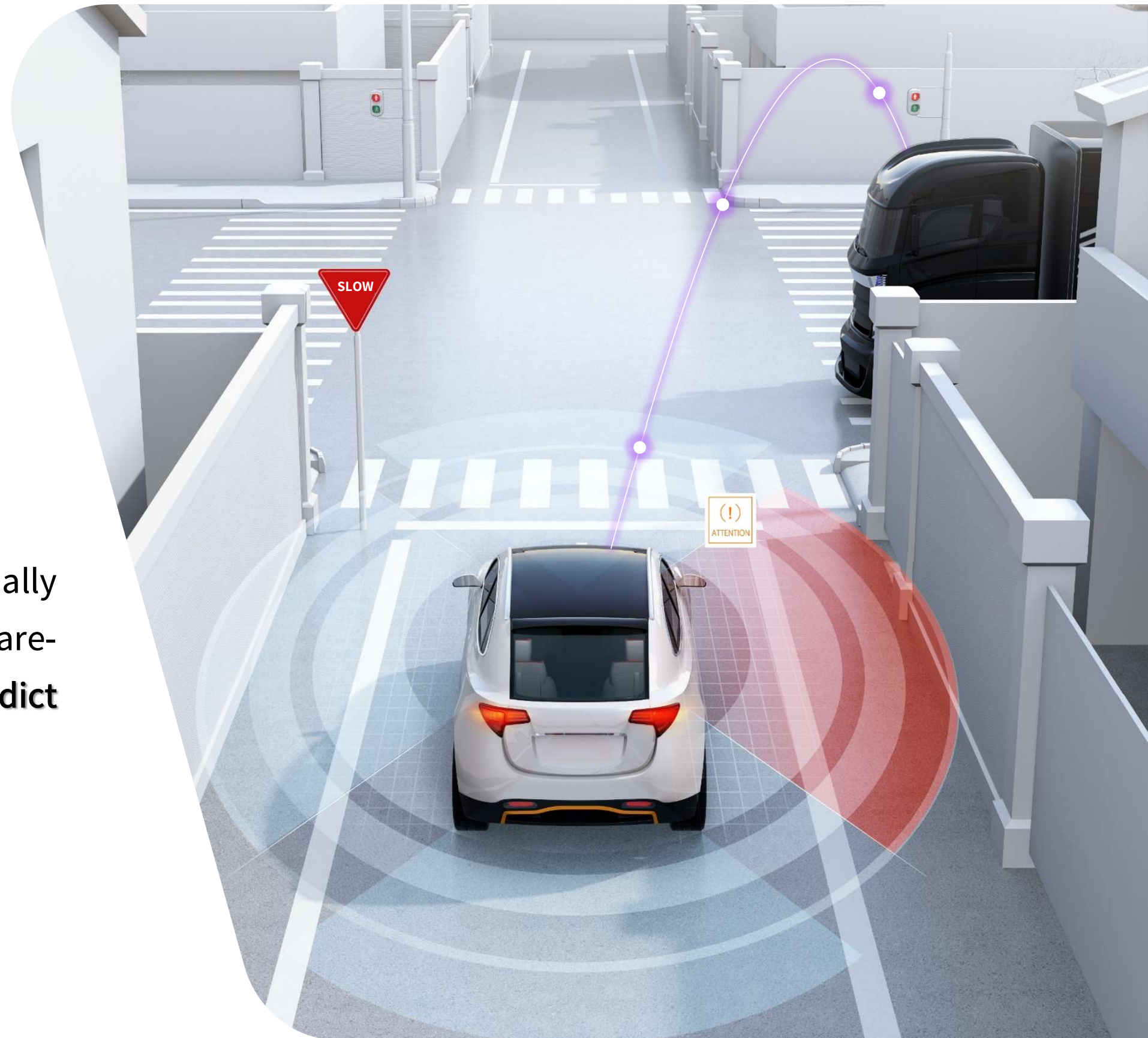
About Eye-Net

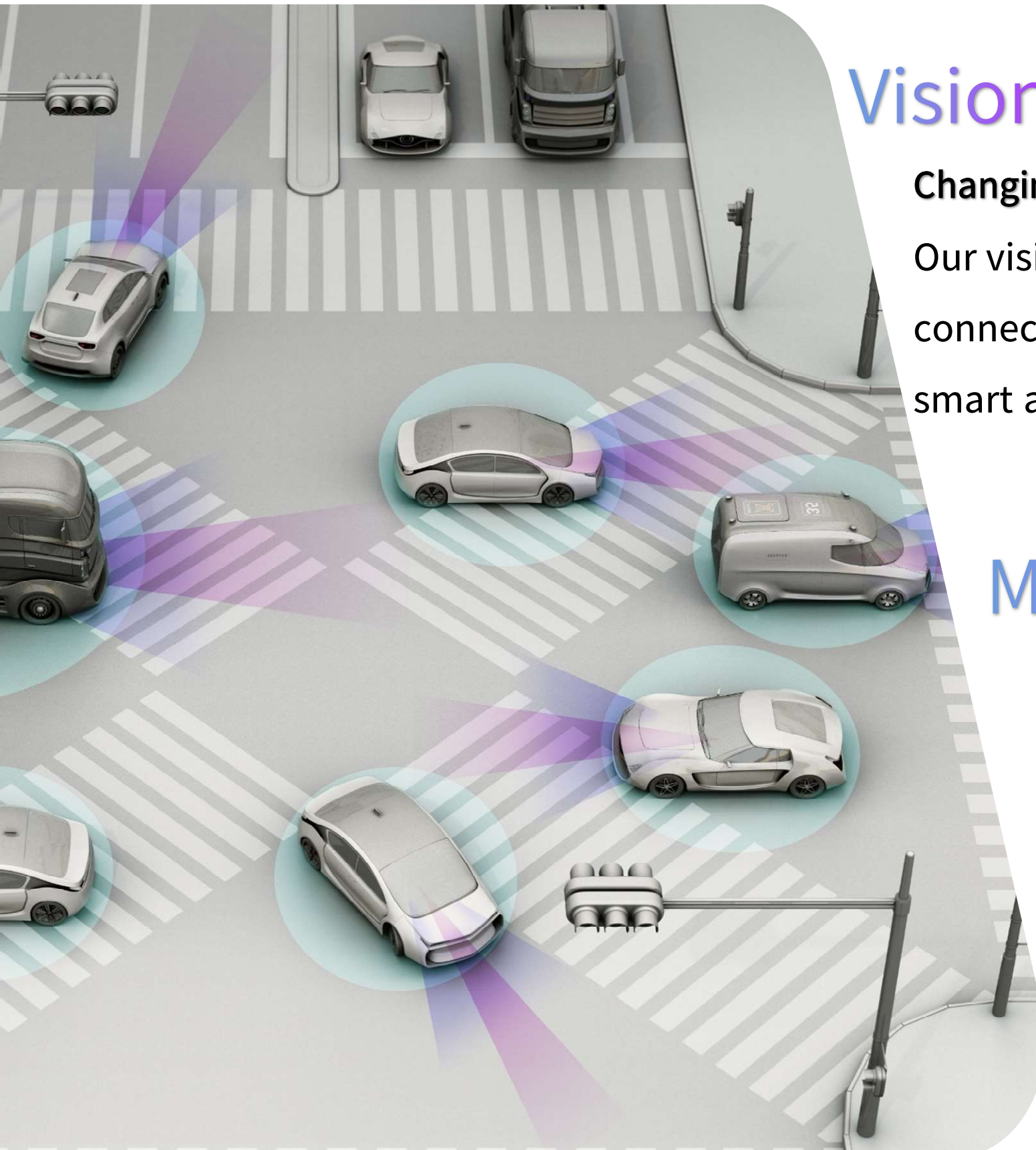
EYE-NET



Next-Gen Smart Collision Prevention Solutions

Eye-Net is a revolutionary and commercially available, **Vehicles to ALL Road Users**, software-based communication solution, designed to **predict and prevent** “Non line of sight” collisions.





Vision

Changing the Game by Connecting Road Users

Our vision is to ignite global road safety transformation by seamlessly connecting all road users through smart cellular-based solutions and smart automotive systems.

Mission

Road Safety For Everyone

We are driven by creating safety and protective solutions for the benefit of all road users. We develop innovative technologies aimed at keeping everyone safe - from motorists through to the most vulnerable road users like pedestrians and cyclists.

Company Highlights

An **Israeli-based** technology product company

Founded May 2018 - Started as a project in Foresight Automotive

Engaged in design and development of **cellular-based** accident prevention solutions

Offers a **SW add-on** designed to provide real-time pre-collision alerts to **all road users**

1 Registered patent + 4 PCT / Provisional

Commercially ready – Commercial integrations and paid POCs

23 Employees - And growing . . .

The Need



EYE.NET

An Unmet Need

1.35M

According to the “WHO” every year there are **1.35M fatalities** in road accidents

54%

vulnerable road users (pedestrians, micro-mobility users and cyclists) account for **54% of road fatalities**

14%

14% of fatal crashes involved the use of cell phones

101s

On average, one pedestrian is **killed every 101 seconds**

~ 9,000

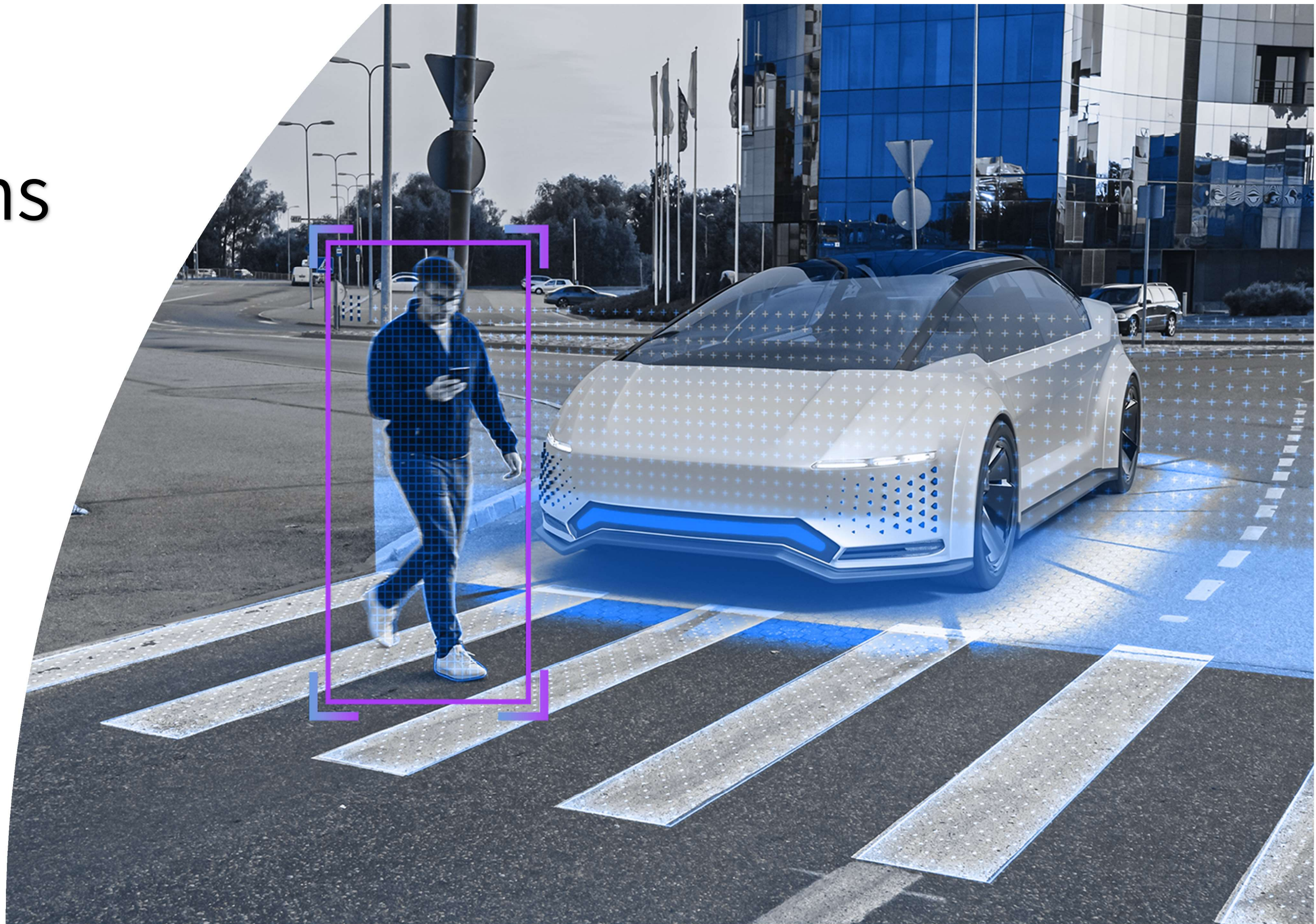
Side impact crashes, in the US, are responsible for **in between 8,000 – 10,000 road fatalities** every year

24%

According to the IIHS , an **estimated 24 percent of all motor vehicle accident fatalities** occur in a side-impact crash

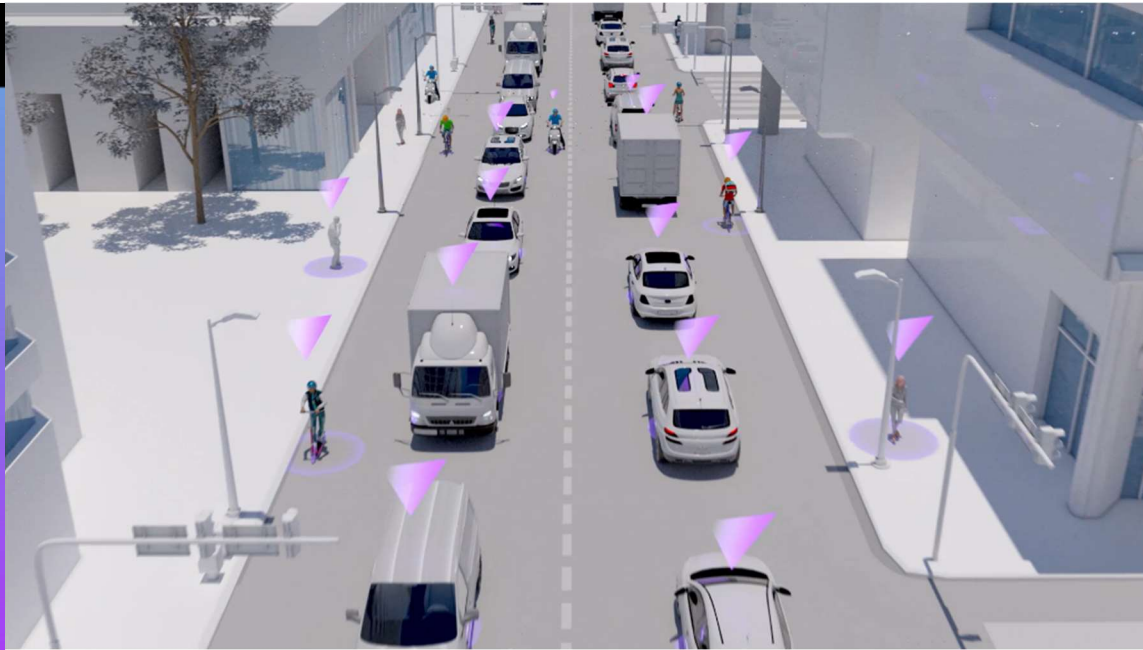
Eye-Net Solutions

EYE-NET



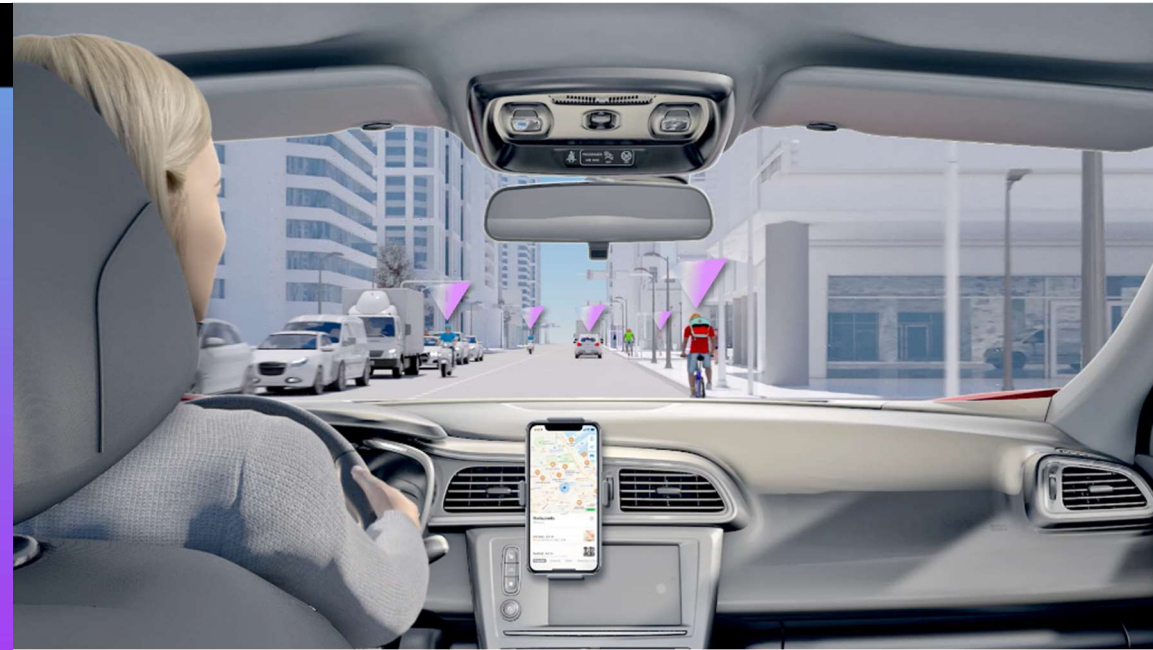
The Eye-Net Solution

1. Location Monitoring



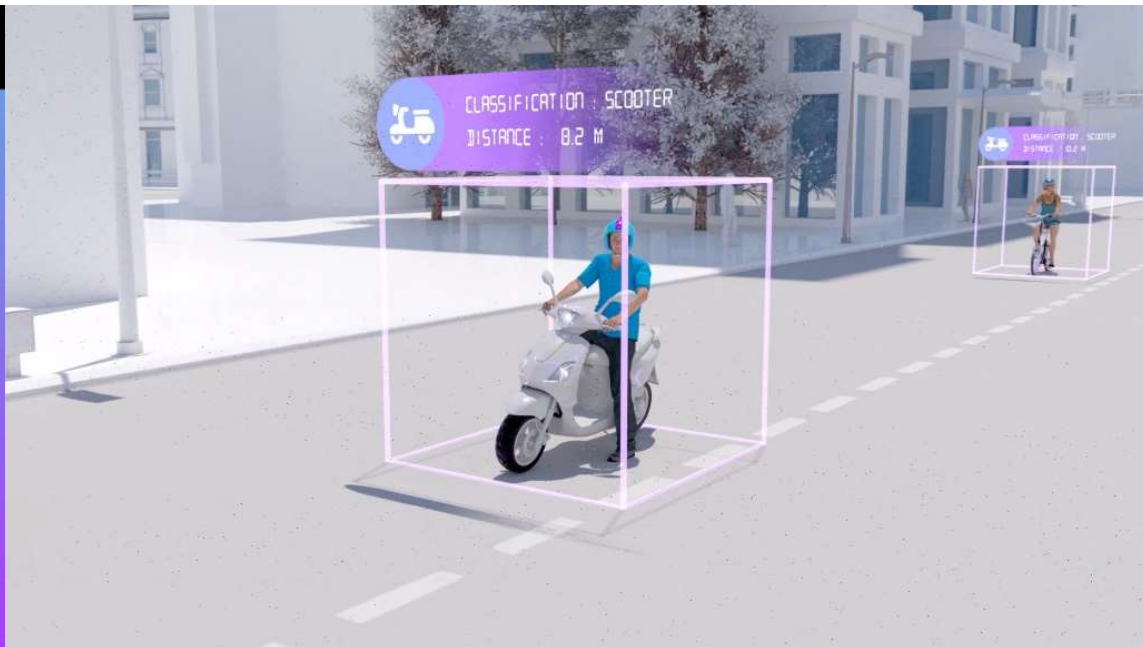
The location of every Eye-Net user's smart device / smartphone is continuously monitored

2. Users Identification



All road users in the vicinity of an integrated vehicle are introduced to the Eye -Zone system

3. Collision Probability



Eye-Zone monitors all users' movement characteristics & calculates probability of collisions

4. In-Vehicle Integration



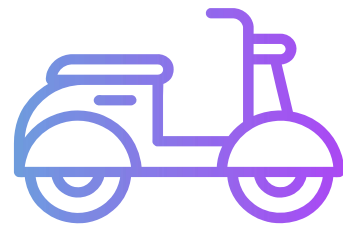
Eye-Zone shares users' location & collision probability with the in-vehicle safety systems

Target Market



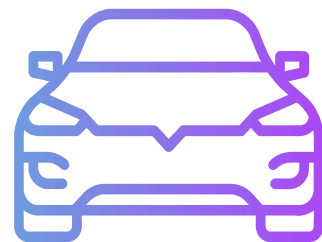
3rd Party Location-Based Applications

Simple SDK implementation for multi-user third-party applications, offering significant added values to the apps and its users.



Micro-Mobility

Simple SDK implementation for shared mobility applications, significantly enhancing user safety.



Automotive

Eye-Zone is Eye-Net's OS agnostic solution for seamless integration with vehicles' systems, providing life-saving alerts to the driver and enhanced safety features and data for the vehicle.

Eye-Net™ Protect



Eye-Net Protect is a software add-on (SDK) that can be seamlessly integrated into 3rd party applications and offers an intuitive mobile interface designed to provide real-time pre-collision alerts to all road users, including the most vulnerable ones (pedestrians, cyclists & micromobility riders).

FEATURES

Side aspect collisions alerts

Awareness notifications (“car brakes ahead”, “cyclists ahead”)

Community Stats

Activity report (premium feature)

Family / Group safety & assistance (premium features)

Automatic emergency call (premium feature)



Most Road Users

Protects most road users
(vulnerable & drivers)



Accurate

Exceptionally accurate design
with near zero false alerts.



Automatic Process

Runs as an automatic
background process which
requires no user intervention.



Side Impact Alerts

Predicts and prevents NLOS
collisions.



GDPR Compliant

Anonymous service.
Requires no registration.



Seamless Integration

Intuitive onboarding with an
instant ability for visual, text
and language modifications.



Harsh weather

Works under all weather
and lighting conditions.



Small Footprint

SDK package compatible
with iOS and Android.



Compatible with any cellular infrastructure (3G and up)

Real-time alerts utilizing
adaptive network latency
compensation of each users'
cellular devices.

Eye-Net™ Sense



Eye-Net Sense is a V2X collision prediction & accident prevention solution that sends alerts and indications to the driver.

Eye-Net Sense serves as a unique virtual sensor named RUDAR (Road Users Detection & Ranging) that provides a point cloud of the real-time location, movement characteristics & probability of collision with each of the road users around the vehicle.

FEATURES

Side aspect collisions alerts

Awareness notifications

“car brakes ahead”, “cyclists ahead”

Multi-User tracker

Analyzes & classifies all users in the vicinity of the vehicle

Automatic emergency service

Automatic emergency call

Automatic report generation in case of a collision

“Where is my car?”

Real-time visibility on vehicle’s location.

Community Stats & Activity report



Multi-User Tracker

Analyzes & classifies all users in the vicinity of the vehicle



Accurate

Exceptionally accurate design with near zero false alerts.



Automatic Process

Runs as an automatic background process which requires no user intervention.



Side Impact Alerts

Predicts and prevents NLOS collisions.



GDPR Compliant

Anonymous service.
Requires no registration.



Seamless Integration

Seamlessly connecting to **external location sources**



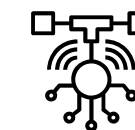
Harsh weather

Works under all weather and lighting conditions.



Small Footprint

Linux-based solution - runs on a single ARM (maximal integration flexibility)

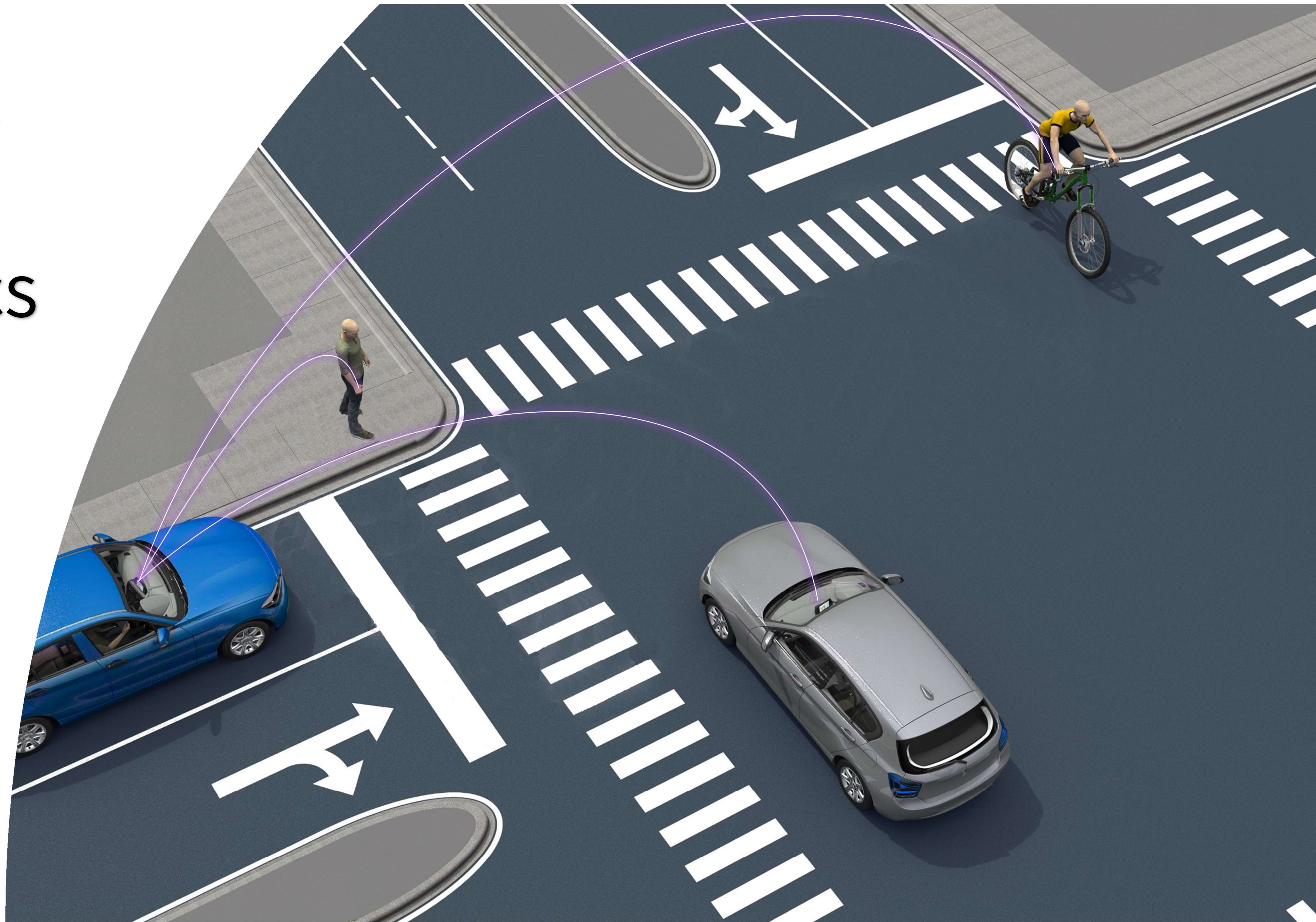


Real-time Protocol

Shares users' location, trajectory, classification, & probability of collision

Eye-Net Data Analytics

EYE-NET



Eye-Net™ View



Eye-Net View is a web-analytics tool that serves as an interface for Eye-Net's suite of applications - an intuitive dashboard designed to provide a comprehensive snapshot on the ecosystem of Eye-Net's users, system KPIs and product efficiency, as well as valuable insights on all road users.

ADDED VALUES

Visual and intuitive display of the collected data

Monitors system KPIs & Product efficiency

Offers online visibility on the generated revenues

Provides valuable actionable insights

Generates reports

Increase hosting apps engagement

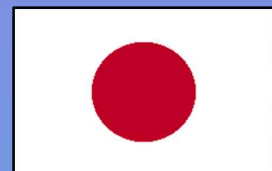
Enabler for new markets and data monetization

Business Traction

EYE.NET



Target Market



Eye-Net Protect

Simple SDK implementation for multi-user third-party applications, offering significant added values to the apps and its users.



Eye-Net Sense

A revolutionary software package, serves as a “Collision prediction virtual sensor” that can be integrated with vehicles’ systems, providing life-saving alerts to the driver, enhanced safety features and essential data for the vehicle.



Business
Partners

 SoftBank



pango

SAVERONE

 **Wunder Mobility**

 **FORESIGHT**

CORNES
Technologies

EYE.NET

ROAD SAFETY FOR EVERYONE

Thank You

Visit Us

eyenet-mobile.com

