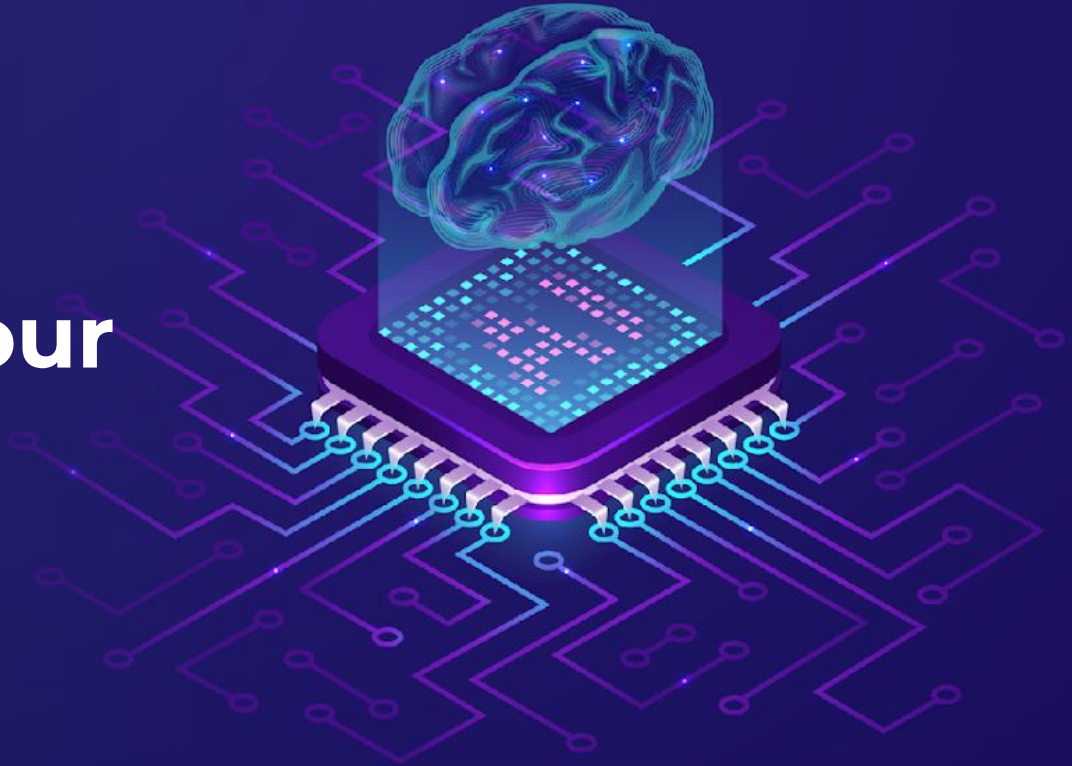




Technology that **reads your mind**



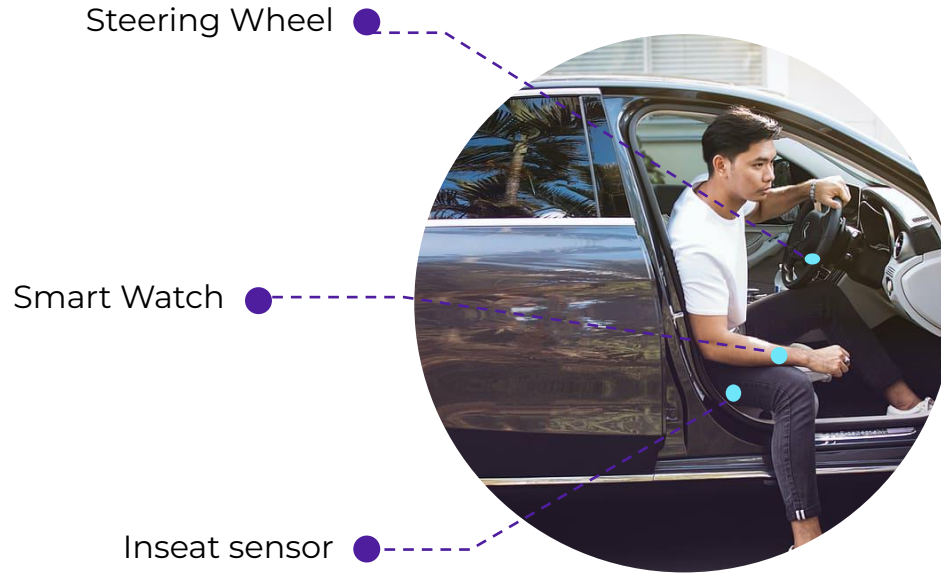


Detect driver fit to operate in **real time**

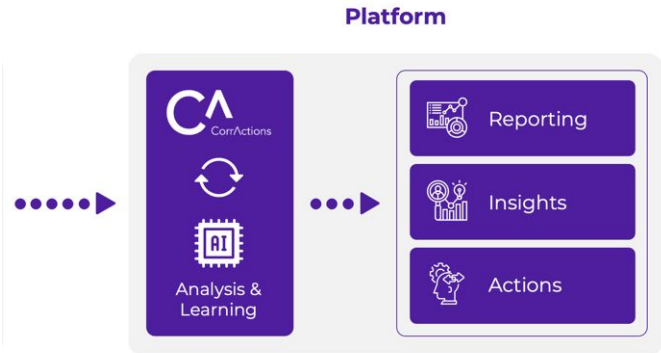




Analysing motion to determine **Driver Cognitive State**



Only one sensor is needed





DMS/ ADAS



Increase Safety Ratings
Prevent Accidents
Meet Regulatory standards

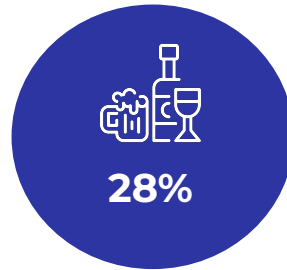
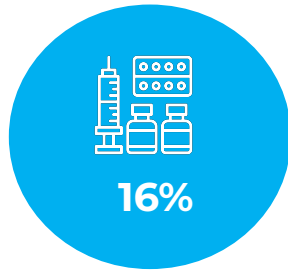
Driver/ Occupant Experience



Improve Driver Experience
Prevent AV Motion Sickness
Tailor Vehicle Environment



Impaired Driving **Has a Big** Impact



54%



38,680

People **died** in accidents during 2020 an increase of about 7.2% over the 36,096 fatalities reported in 2019.



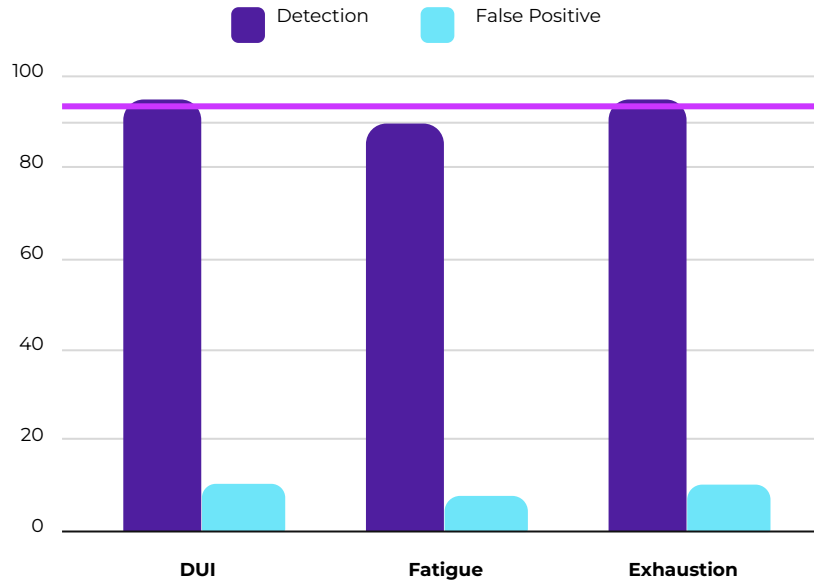
\$43.2 billion

The cost of **alcohol** related accidents represents **18%** of all accident costs, 11,226 fatalities, 326,000 nonfatal injuries.

Source: [1] NHTSA 2020 reports [2] IIHS-HLDI 2019 reports



Accurate results in **Real Time**



Based on 250,000 Samples

**Average
of 92%**

PoCs:

- 1 OEM - PoCs complete. Joint project definition.
- 1 OEM - Joint PoC.
- 1 Tier 1/2 - Joint PoC.
- 2 OEMs - PoC definition.





SW only

Multi-Symptom
Detection

Fast Detection



HW Agnostic

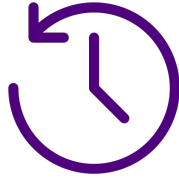
Impairment Severity
Detection

Broad Neuroscience IP





At Any Point During The Drive



Predrive



While Driving

Any Vehicle



Personal



Commercial



Heavy Duty



2 Wheelers



Zvi Ginosar
Co-Founder & CEO

Senior Hi Tech business executive with broad experience in Corporate, Startup and Government business related activities.

Intel, Numonyx BV and Micron Technology. Led worldwide operations support including strategic and business planning reaching an annual volume of \$2.3B



Eldad Hochman
Co-Founder & CSO

PhD, Neuropsychologist and brain scientist, an expert in the field of performance monitoring, action and error control. Previously a research associate at the Montreal Neurological Institute, Canada. Currently a lecturer at the Open University of Israel.





Thank You

