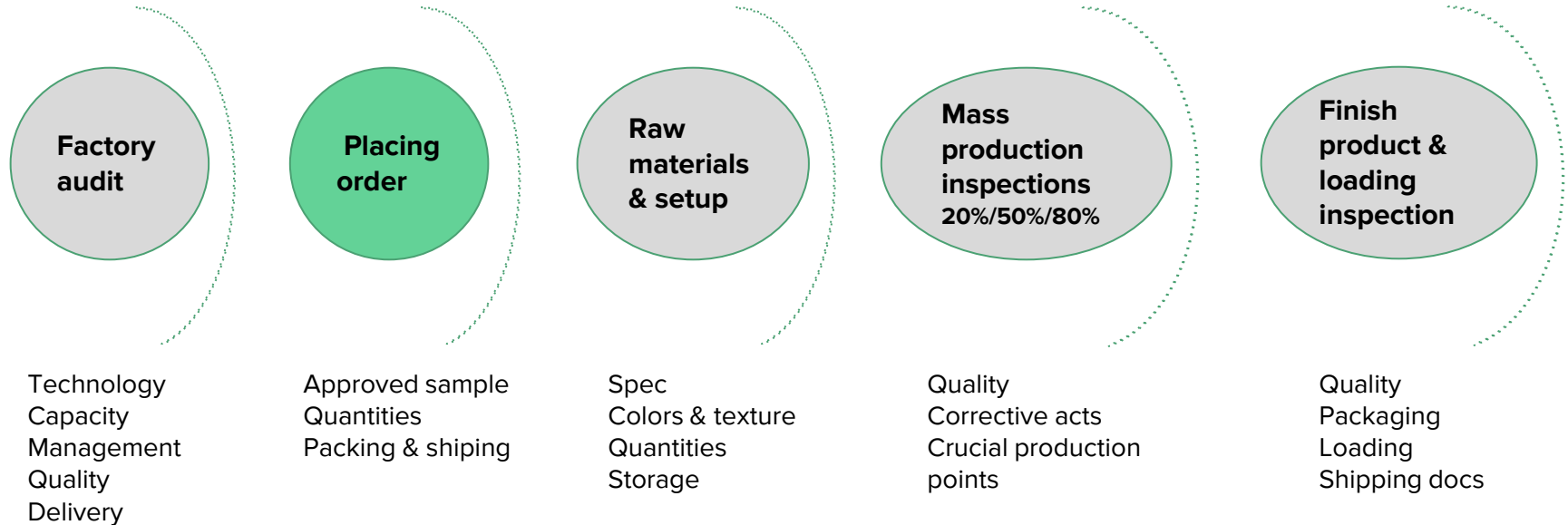




**COZE**

Quality Control Platform for everyone

# SUPERVISING THE FULL PRODUCTION PROCESS IS COMPLICATED





# YOU PLACE AN ORDER IN CHINA, NOW WHAT?

1. **Assure mass production matches approved sample is hard :**
  - a. Make sure Raw materials are in the right spec
  - b. Production set up need to be approved before mass production
  - c. Status of mass production completion and quality are usually provided too late
  - d. You don't want to be surprised when you open the container
2. **Full production inspection is expansive :**
  - a. Daily inspector rates are high - 350\$-700\$
  - b. Each Order required at least 4 inspections in order to stay on the safe side
  - c. The majority of the common inspection files are irrelevant for SMB's
3. **Production problems are unexpected and required immediate action :**
  - a. Most of inspection companies required early schedule
  - b. Real time information is missing

# INTRODUCING COZE



We're on a mission to connect importers / global manufacturers all over the world with qualified local Chinese quality technicians process by reimagining the way enterprises works their quality management and suppliers.

Whether you're a fresh Amazoner or in charge of multiple products production, Coze organizes your quality inspections seamlessly, so you can be sure that: **what you ordered is what you get**



# WHAT IS COZE

Coze is a marketplace platform that provide collaboration with local technicians and manages your entire quality inspections across the different production stages.

- Reach out for available technicians in the same area that your factory located
- Discover technicians industry expertise, qualifications and rate
- Hire technicians by the hour
- Discover inspection categories and field tests
- Build your unique inspection form with only few minutes
- Monitor inspection progress in real time
- Increase your likelihood to hit your delivery date on time and on-budget
- Send your product for a full Lab Test (ISO 17025 certified Labs)



# OUR CAPABILITIES

## **From full factory audit to single product quality inspection**

We're equipped to handle all your field inspection needs and principles, from a complete production monitoring to a short sprint that provide you with the information you need to take decisions. There's no project too big or too small.

## **Guided scoping**

We have gathered best practices field tests and inspections organized in a production stage based database so you could learn, build and collaborate your requested inspection with available technicians.

## **Anytime anywhere**

We'll connect you with the nearest available technician skilled with the right skills required to the job.

## **Every industry and inspection**

We have experts across the board, including most common industries and variety of inspections, Qualified with our in house qualification program.

## **Project management**

If needed We'll assign you a dedicated Product Manager to manage your team, manage progress, and manage deadlines. We build everything according to best-in-class quality management principles.



# OUR CAPABILITIES

## **Progressive payments**

Payment is conducted through the platform and aligned with the progress of your project. After an initial deposit you'll pay as work is completed.

## **Satisfaction guaranteed**

You'll never pay for overages and our work is guaranteed. We'll even monitor your product after it's delivered.

# CURRENT STATUS



124 Customers

480 manufacturers

More than 1,900,000 questions asked

7,800 minor defects have been detected

740,000 were photographed in the system

1,560 major defects have been detected

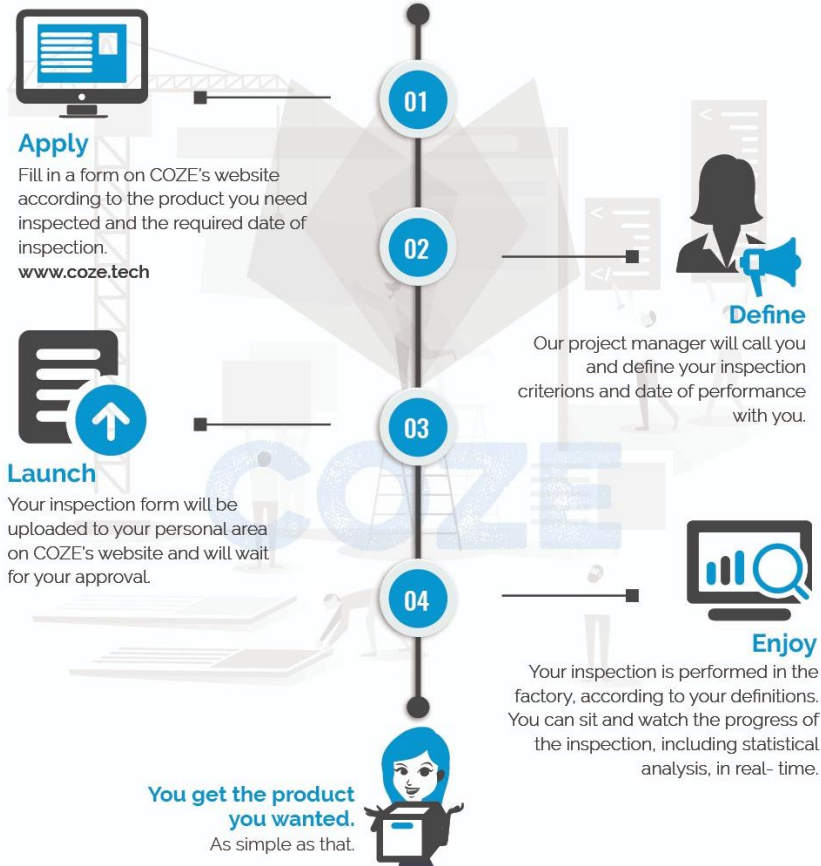
1000+ Chinese technicians on board the platform

Operated in more than 90 Chinese cities





# CURRENT STATE INSPECTION WORKFLOW





Next step

**We would like you to team us up with 1-3 orders you have placed in China recently that required inspection.**

**COZE will do the rest !**

[www.coze.tech](http://www.coze.tech)

[Info@coze.tech](mailto:Info@coze.tech)

