

**COMPANY NAME:** RFISSEE Ltd.

**LOCATION:** Ra'anana, Israel

**INDUSTRY:** Automotive

**PROTOTYPE DEMO:** Available.

Radar prototype proves our patented technology with superior performance.

**INTELLECTUAL PROPERTY:** 1 patent approved by the PCT + 2 pending patents

**STRATEGIC PARTNERSHIPS:**

Tier-1 Automotive Suppliers and OEMs

**OBJECTIVES:**

Bring our Gen1 Radar to the market (MVP):

- Develop Gen1 4D Radar product
- Provide Radar Samples to OEMs and Tier-1 suppliers
- Commercial agreements with committed customers and partners

**Contact:** Moshe Meyassed, CEO

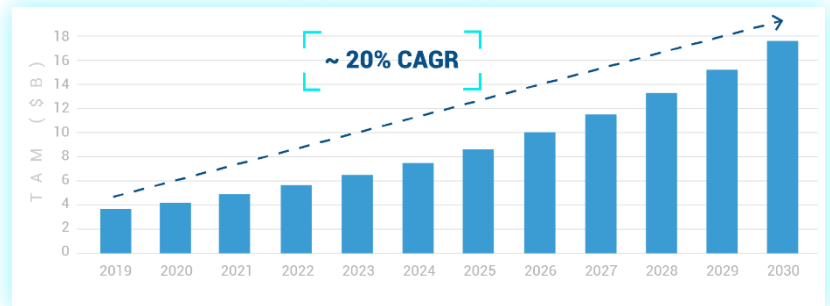
**Email:** moshe@rfisee.com



**PROBLEM/OPPORTUNITY:** Radar is a mission-critical component for increasing automation in vehicles. Current ADAS systems with Optical and Radar sensors are close to reaching their limit. RFISSEE's all-weather 4D Imaging radar with high angular resolution and long detection range will become an essential part of every future ADAS sensors suite and will pave the way to higher level of automation in driving.



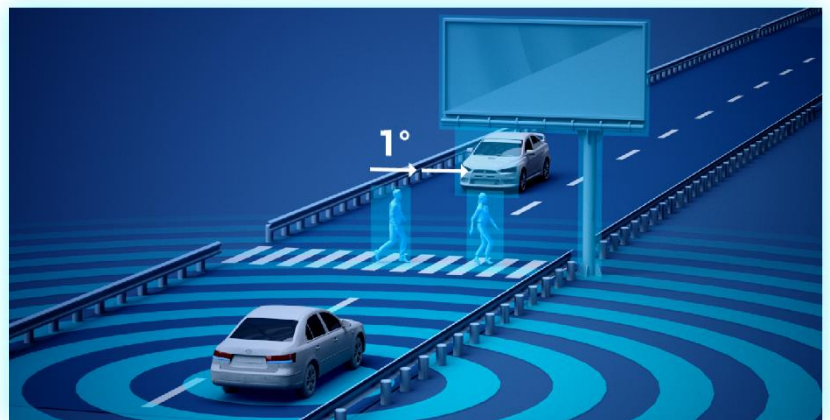
**THE MARKET:** Automotive Radar market will grow to \$17B by 2030



Radars are predicted to remain the largest segment of automotive sensors.



**PRODUCTS/SOLUTION:** RFISSEE Radar detects cars from 500m and pedestrians from over 200m. The Angular Resolution is better than 1 degree. It is achieved by taking the Phased-Array technology used in the defense industry to the price-point of Automotive sensors.



**BUSINESS MODEL:** The 4D Imaging Radar will be sold to car manufacturers (OEMs) via Tier 1 partners. RFISSEE will sell to the Tier 1 the dedicated radar silicon it is developing, the radar board (Tier-1 dependent) and license the radar SW and IP.



**COMPETITIVE EDGE:** Unlike traditional radars and newcomers, RFISSEE 4D Imaging radar uses a powerful focused beam based on proprietary phased-array radar technology. This focused beam created by tens of transmitters rapidly scans the field of view and tens of receivers ensure significantly improved radar image, better signal to noise and longer obstacle (cars, pedestrians, etc.) detection ranges: 6X longer range compared to existing radars. This competitive edge is already proven by RFISSEE radar prototype.



**CORE TEAM:** The dedicated exceptional team has complementing skills: **Nissim Hadas** (active Chairman) a world-class radar expert, was the CEO of Elta, world 3rd largest radar company; **Moshe Meyassed** (CEO) has vast experience in introducing deep-tech products to the market; **Nir Mor** (Co-Founder, CTO) has successful track record in SW and Radar Imaging; Prof. **Eran Socher** (Co-Founder, CSO) is a world-class leader in CMOS RF ICs; **Isaac Shenberg** has grown a semiconductor start up to a >\$300M/year company.