



MASSIVE, COMPLEX DATA ANALYTICS - **FASTER**

January, 2021

MASSIVE DATA ANALYTICS IS A KEY

- Data exponentially grows
- Data insights are very important for business operation and success



Analytic Data	Data Lake	% of Data Analyzed
10 TB	100 TB	10 %
20 TB	500 TB	4 %
>30 TB	>1 PB	<3 %

FASTER ANALYTICS ON MORE DATA MORE FREQUENTLY

Rapidly ingest and analyze the full scope of your massive data, TB to PT, to achieve critical insights that were previously unattainable.

**INGEST
DATA
FASTER**

>3PB PER HOUR
PER GPU

**ANALYZE
DATA
FASTER**

RUN SQL
QUERIES FASTER

**ANALYZE
MORE
DATA**

RUN QUERIES
ON MORE DATA

**ANALYZE
MORE
DIMENSIONS**

ENABLE MORE
COMPLEX JOINS

**SHORTEN
DATA
PREPARATION**

AD-HOC QUERIES
ON RAW DATA

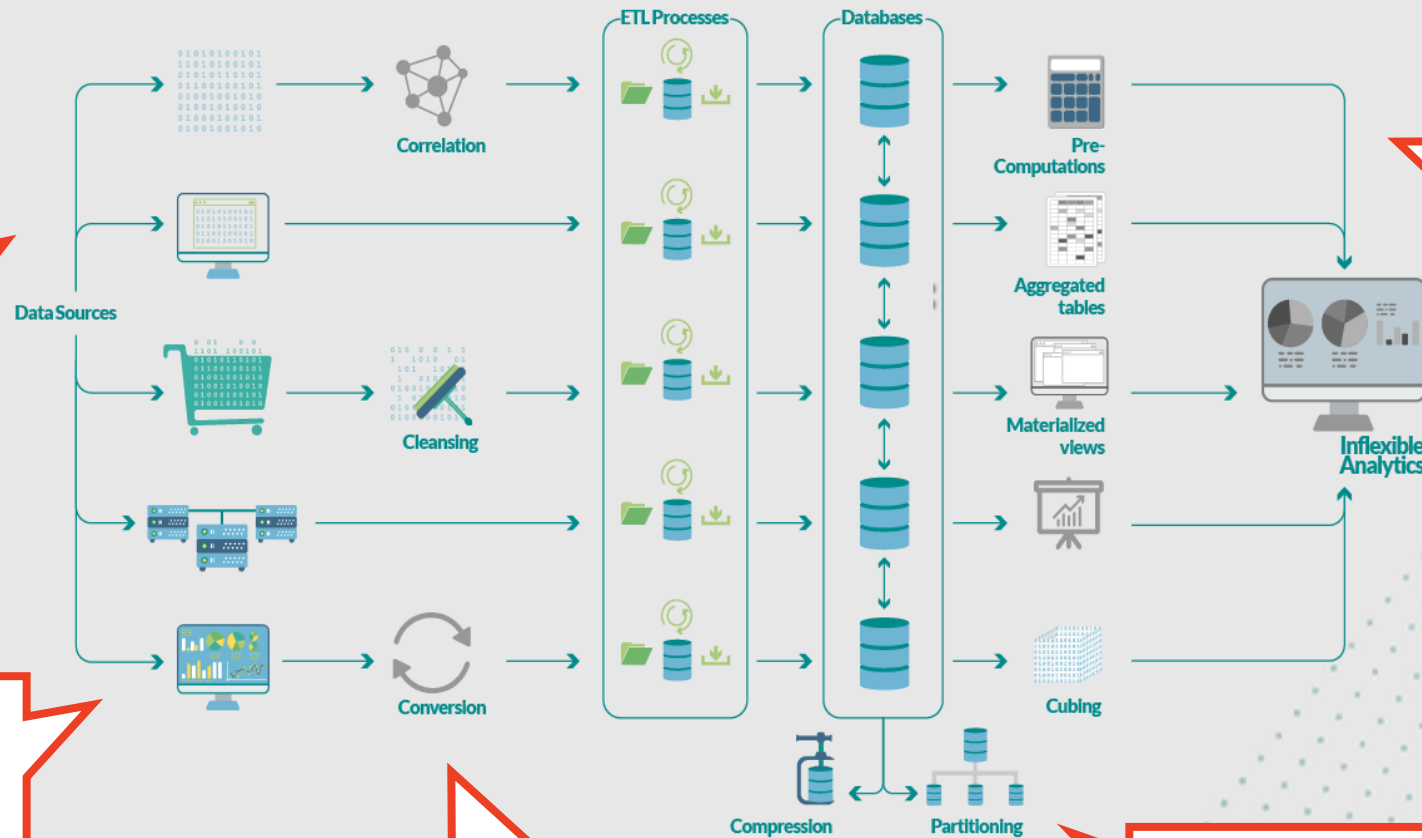
Superior cost-effectiveness
Less HW, Lightning performance, Reduced energy

WHAT WE'RE HEARING... AND ADDRESSING

"Queries run way **too long** and sometimes not at all"

"We have lots of data, but I can analyze only **10%**"

"Lengthy data preparation"



My **business** needs more comprehensive analytics

"Our analytic reports are **limited** in scope"

"Some important queries are **too complex** to run"

BUILT FOR MASSIVE DATA ANALYTICS



POWERED BY GPUS

- Massively parallel engine
- Faster and smaller than CPUs



MASSIVELY SCALABLE

- Terabytes to petabytes
- Not limited by RAM



EXTENSIBLE FOR ML/AI

- Python, AI, Jupyter, etc.
- Built for data science



MINIMAL FOOTPRINT

- High throughput compute
- Very cost-efficient



LIGHTNING FAST

- Ingests 3 TB/hour/GPU
- Always-on compression



SQL DATABASE

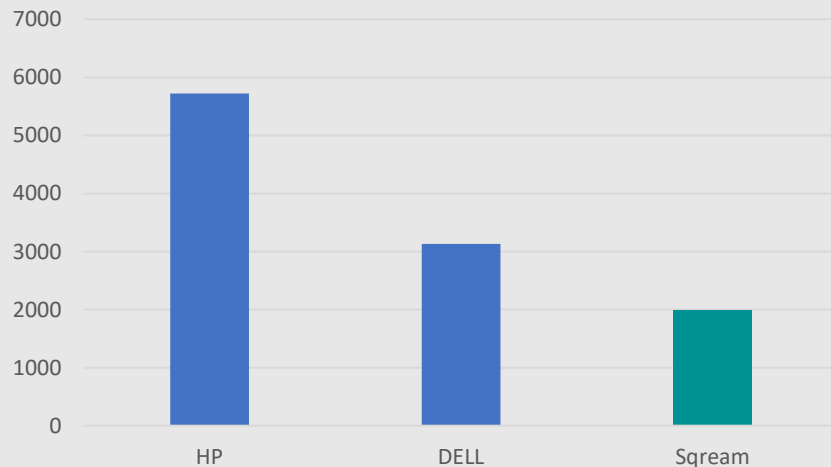
- Familiar ANSI SQL
- Standard connectors



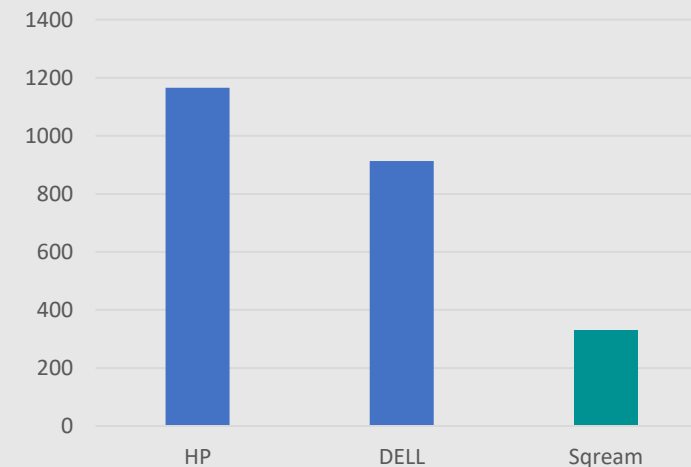
10TB BENCHMARK RESULTS (Jan 2021)

SQream Overall x5-x10 Cost effective

Performance (Sec)

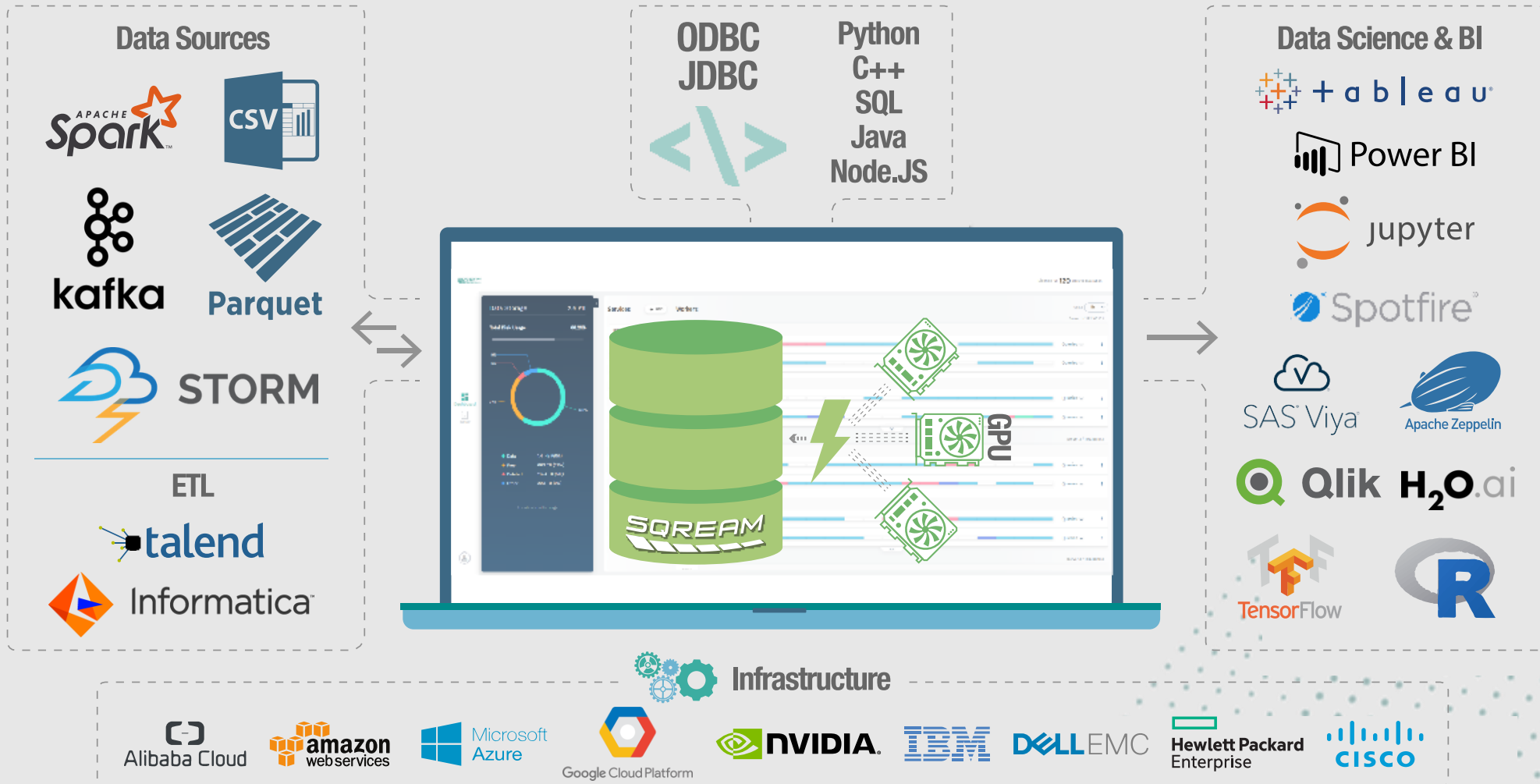


HW Cost (\$K)

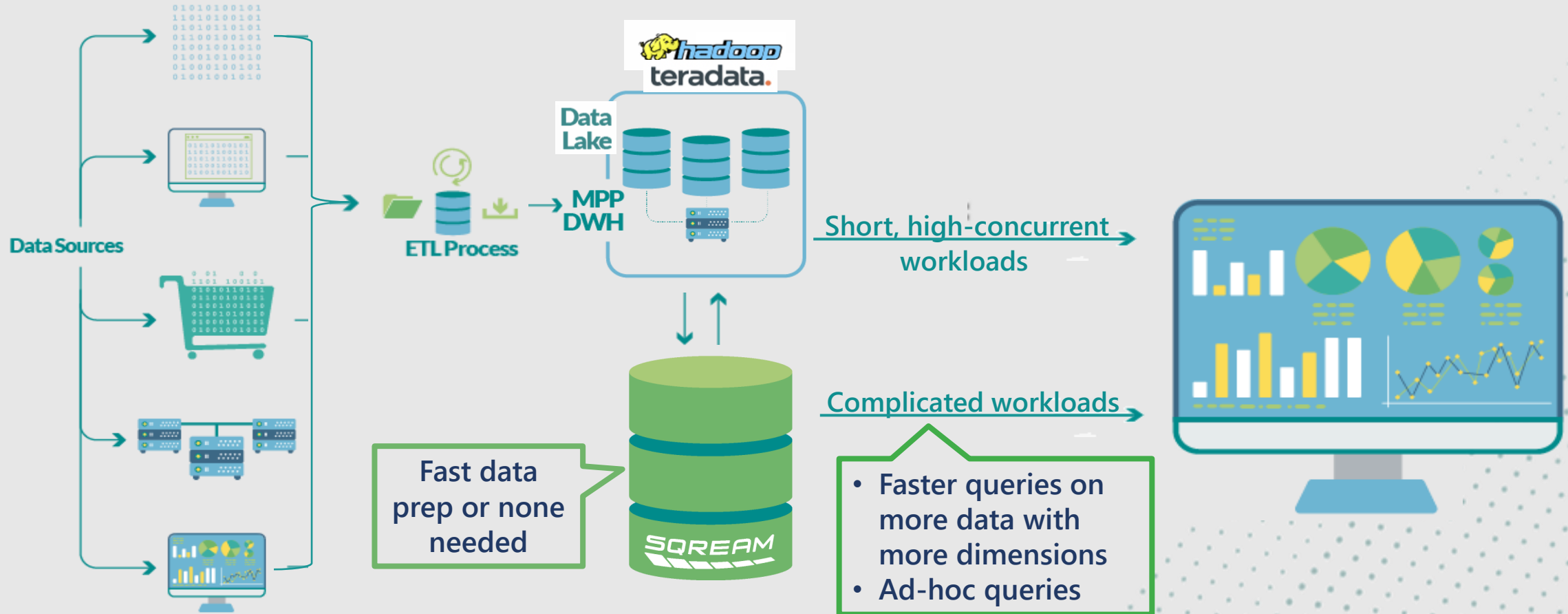


TPCx-BB Express Benchmark measuring Hadoop-based Big Data performance by executing ~20 frequently performed structured analytical queries

SEAMLESS INTEGRATION INTO YOUR ECOSYSTEM

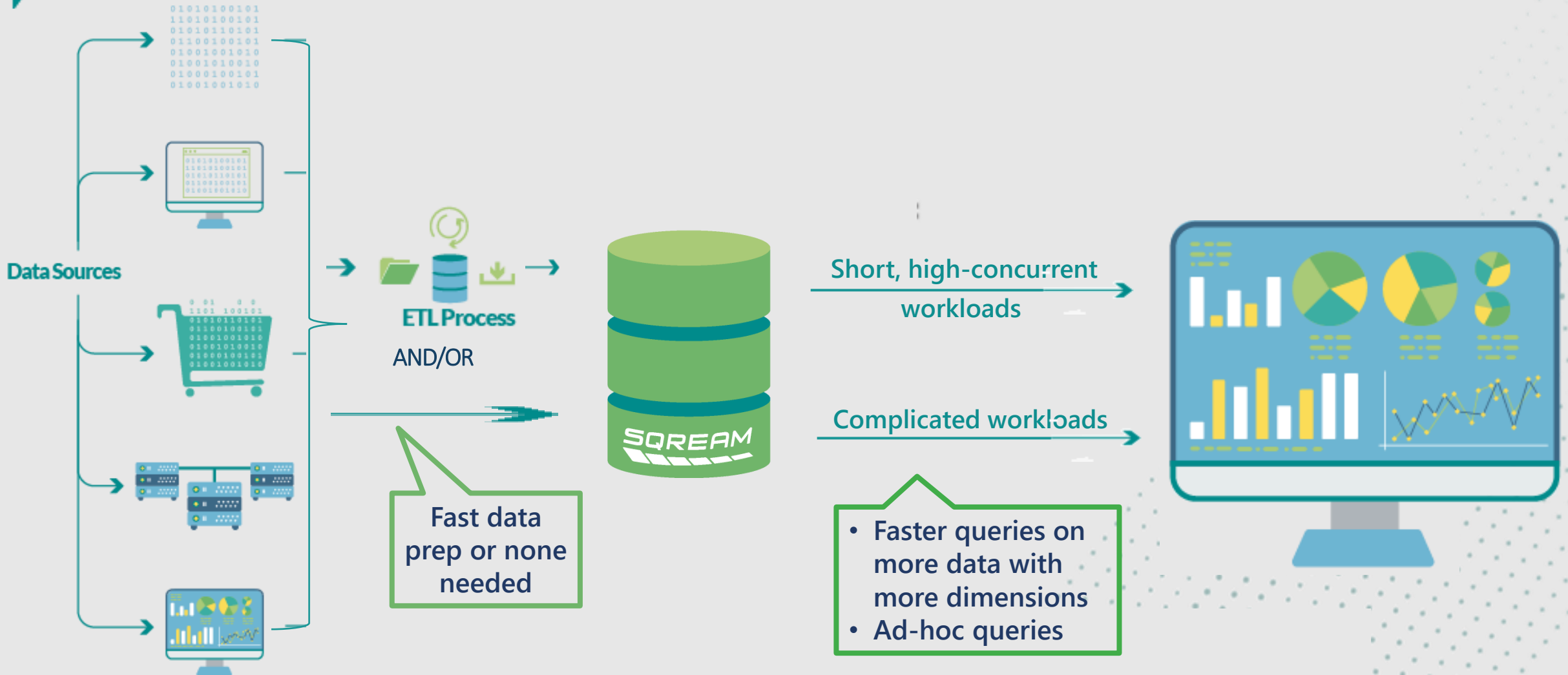


SQREAM DB NEXT TO DATA LAKE/DATA WAREHOUSE FOR FAST/COMPLEX QUERY

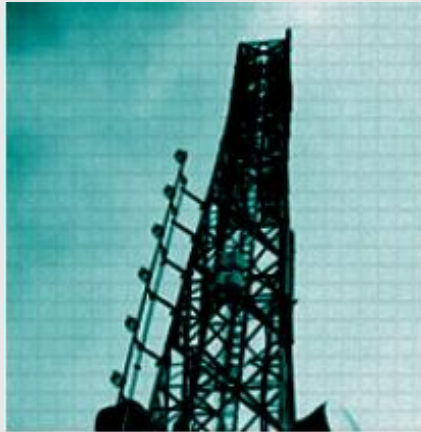


SQream increase analytics performance by 200% and saves you \$M's on infrastructure

SQREAM DB AS YOUR MPP/DATA WAREHOUSE FOR ALL QUERIES



WHERE WE MAKE A DIFFERENCE



TELECOM

- Network optimization
- 5G Planning
- Improved QoS
- Customer 360



MANUFACTURING

- Predictive Maintenance
- Optimized production
- Improved quality testing
- MES



FINANCE

- GL & reports aggregation
- Risk analysis
- AML
- Capital markets
- Transaction analysis
- IFRS/GAAP



HEALTHCARE

- Optimized operations
- 360 patient view
- Customized care

LEADING PLATFORM FOR MASSIVE DATA ANALYTICS

LiveAction™

SK telecom

SHEBA
Tel HaShomer
City of Health

LG U+

PubMatic

orange™

Data analytics acceleration platform for MASSIVE data,
driving game-changing insights and value.

AIS

Alibaba Cloud

Cellcom

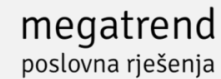
ACL

C&S
Wholesale
Grocers

SQREAM

KEY PARTNERS

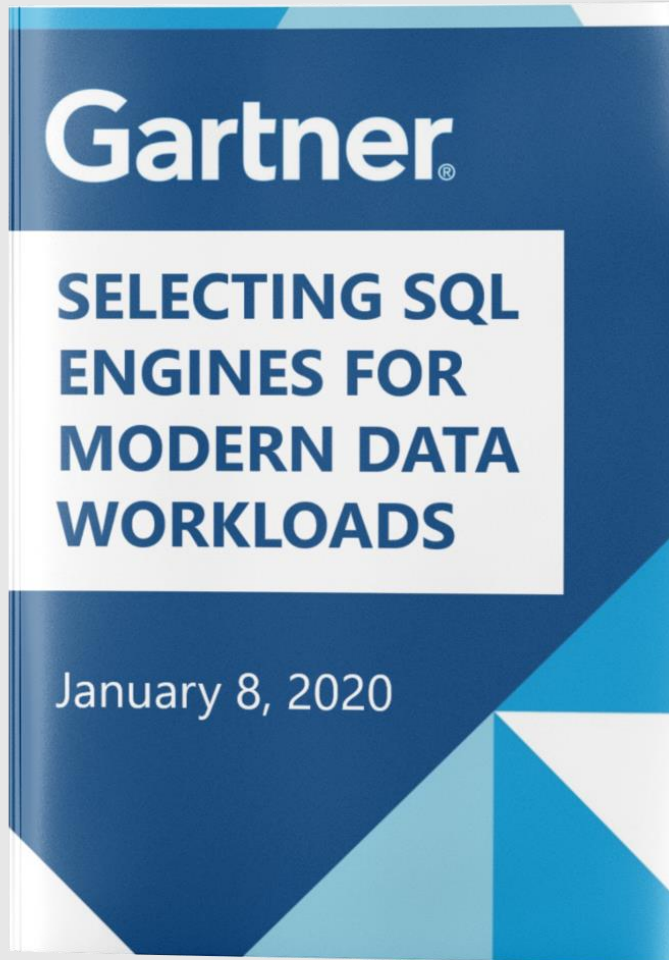
Technology



Infrastructure & Hardware



ARCHITECTED FOR MASSIVE DATA



“ *SQream DB is architected for **massive data stores** and adds enhancements to the data warehousing life cycle and speeds up data ingestion.* ”

FAST-GROWING WITH A GLOBAL PRESENCE



100+
employees



Strategic Partnerships with



10
patents

CASE STUDY

1.5 PT PRODUCTION DWH TRANSFORMATION



CHALLENGE

- Nightly batch ETL process: consolidating and processing massive HDFS data (CDR/IoT/log)
- Maintaining Hadoop Hive became too costly
- Need to improve DWH cost-effectiveness while improving performance

SOLUTION

- 1 node SQream (replacing 150 nodes Hive)
- rapidly joins data from numerous sectors
- ORC Read; Window Functions (Lag & Lead); Full HDFS Connectivity

BENEFITS

- **Queries accelerated 7x**
- **Improved cost-effectiveness and performance**
- **Faster results for business users across the organization**



Back



SQREAM

avis@sqreamtech.com | www.sqream.com