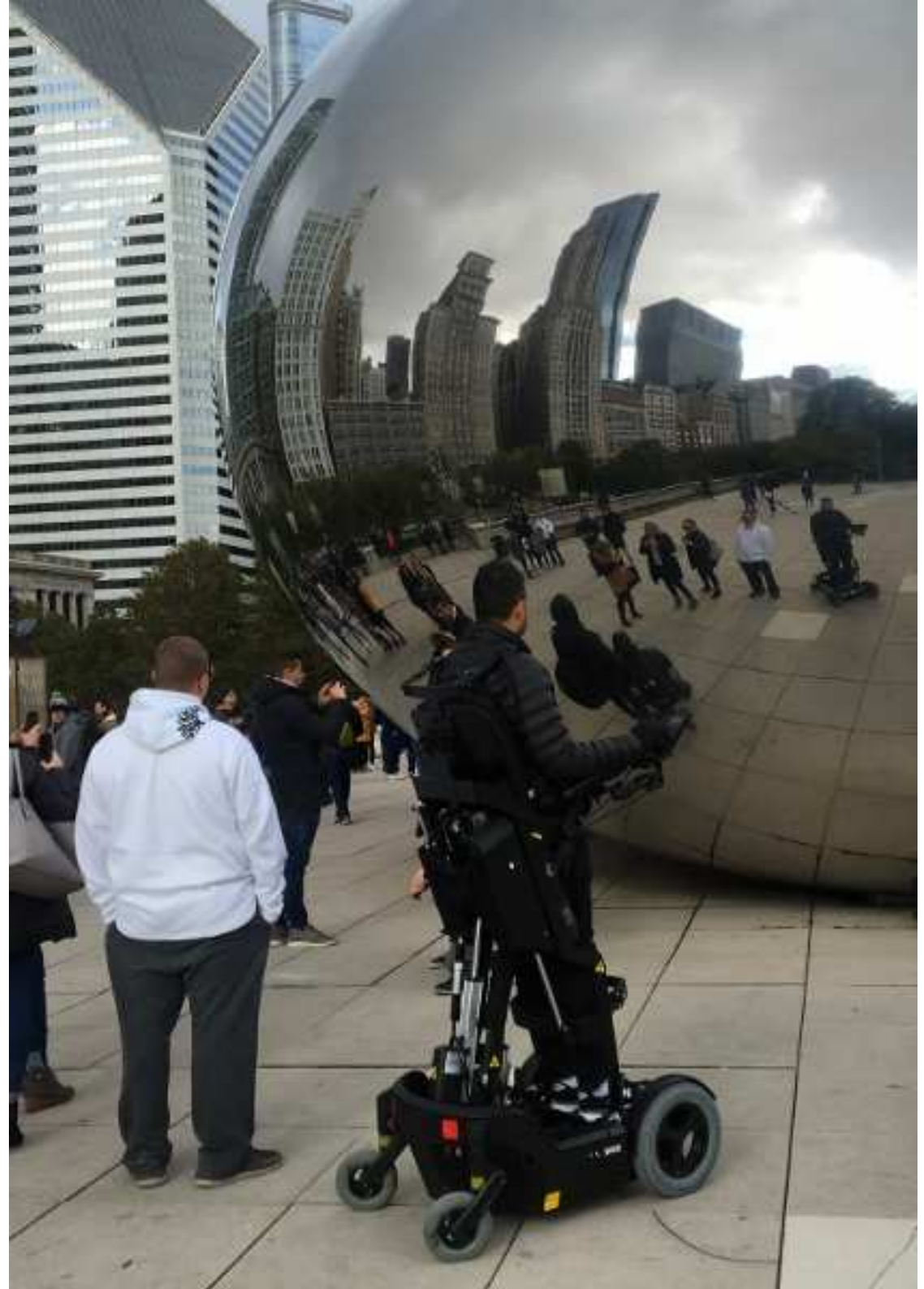




The right to
stand upright



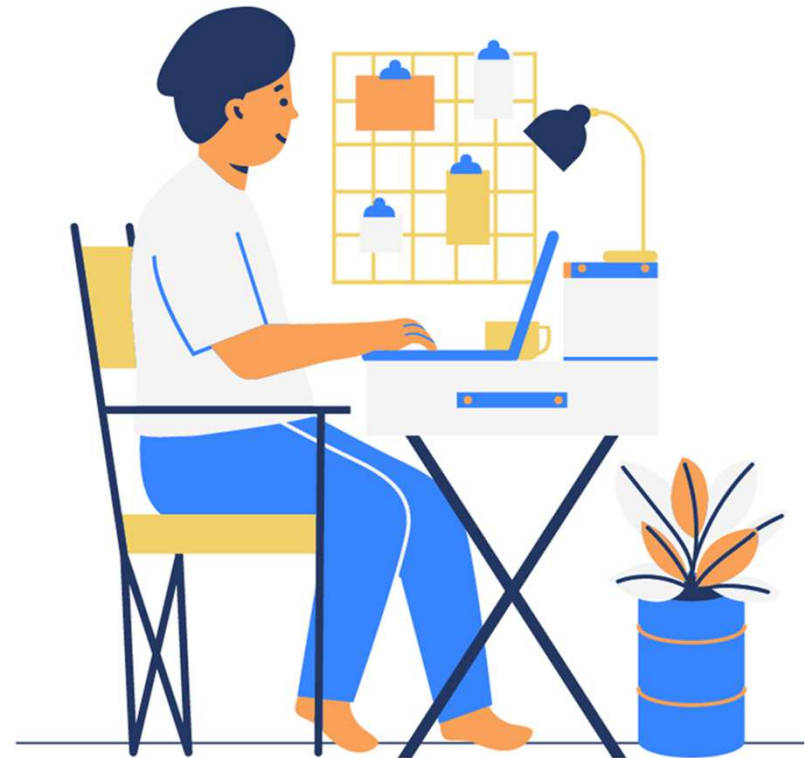
Sitting is a disease

- **Risk of chronic health problems**

Cardiovascular, blood, bone, weight, bowel, cancer...

- **Mental health issues**

Anxiety, depression...



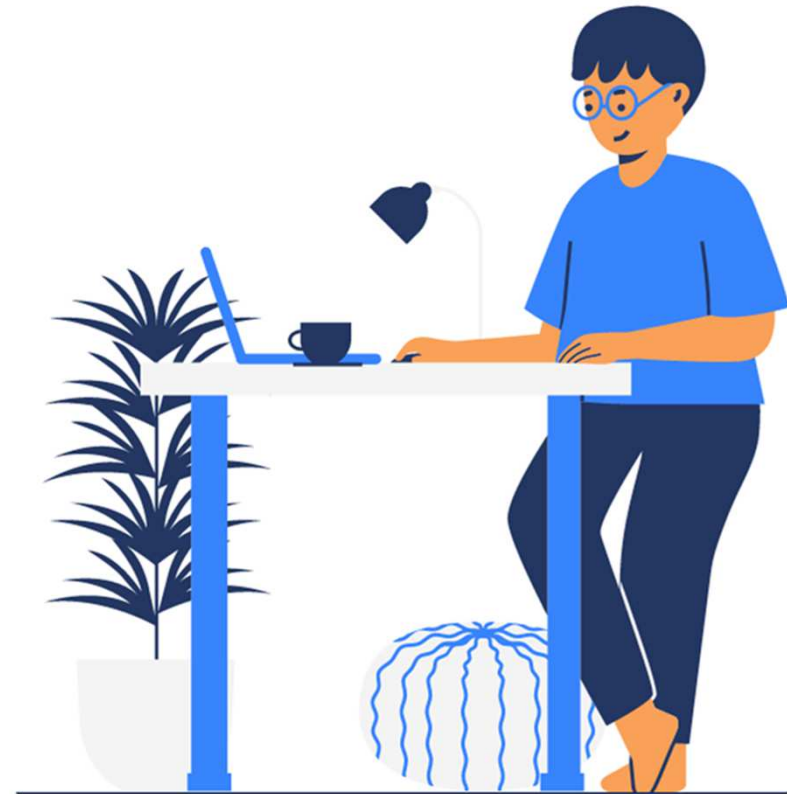
...and standing is the cure

- **Improves physical health**

General health, well-being...

- **Enhances Mental health**

Quality of life, energy, mental well-being...



The Problem

Millions of Wheelchair users are **invisible**, suffer from **health and social inequity** and become an **economic challenge** to the society.

- **Social inequity**

Social exclusion, low self-esteem, invisibility, unemployment...

- **Health inequity**

Wheelchair sitting leads to poor health and wellbeing (urinary and pulmonary inflammation, pressure ulcers, cardiovascular, circulation, bowel movement, bone density, joints, pain, cholesterol...).

- **Economic challenge**

\$120K on healthcare and GDP loss of \$70K (annually)



The Solution

UPnRIDE is the first and only device that provides wheelchair users with **full upright mobility**

- Safe and functional mobility, both in standing and sitting position, in practically any urban environment.



Technology

UPnRIDE is based on disruptive technology -
4 patents and **proprietary know-how**

- **Center of Gravity**
COG is kept when transitioning from sitting to standing - Stability
- **Auto balancing**
User is kept vertical to earth – Extra stability
- **Exoskeleton structure**
Comfort and safety in all positions
- **Knee support**
Unique design for prolonged standing
- **Safety algorithms**
Automatic response to hazards



CLICK HERE 

https://www.youtube.com/channel/UC1QYZnVEs4PUWUNgBmXS_Aw Product Demos

Benefits

UPnRIDE contributes to user's social and health equity and to the economy of the disability

- **Social Equity**
Eye to eye interaction, Inclusion, self-esteem, happiness, employment, equal health status...
- **Health equity**
Physical and mental health, wellbeing...
- **Economic relief**
Less medical and general expenses to health insurers and to user's family and community, and contribution to GDP.



Who UPnRIDE is for



Individuals

Any person who is confined to a wheelchair (SCI, MS, ALS, Stroke, TBI, CP...)



Medical institutions

Shortening hospitalization time by bringing patients from bed to upright position

“This machine is an absolute miracle...
It would make a big difference in
somebody’s life.”

SRAlab Patient



CLICK HERE



<https://www.youtube.com/watch?v=QOv7sZN9E14> SRAlab



CLICK HERE



<https://youtu.be/-GHdTrNnJCg>
Ryan Chen

UPnRIDE passed successfully safety and
usability studies

Thank you!

Oren Tamari, CEO

oren@upnride.com

+972-52-8627448

www.upnride.com