



## **Zuf Globus medicinal non-infused honeys**

- **Scientifically supported**
  - **Clinically studied**
  - **Consumer proven**

# Full Body Unique Therapeutic Remedies



# Table of Contents

- [About Zuf Globus](#)
- [The Story](#)
- [What Makes Our Dietary Supplements TRULY Unique](#)
- [ZUF Globus Product Premises](#)
- [Competitive landscape](#)
- [Compliance to standards required to manufacture nutritional supplements](#)
- [Our unique production process](#)
- [Zuf Globus Beehive Products](#)
- [Appendices](#)
  - [Testimonials](#)
  - [Clinical Studies](#)
  - [Media Coverage](#)
  - [Comparison to Manuka honey](#)



# About Zuf Globus



- ✓ Zuf Globus's mission is development, manufacturing and marketing of unique natural dietary supplements, in the form of pure honey-like products.
- ✓ Production of the unique natural products and dietary supplements is based on medicinal herbs well established for their healing properties.
- ✓ Zuf Globus products represent the result of over 30 years of extensive research by our scientific team.
- ✓ Based in Kiryat Shmona, in northern Israel, we offer a number of formidable remedies, to improve health, wellness, and the quality of living.

# The Story



- ✓ The Zuf Globus story began with research in the 1970s by Dr. Alexander, then a medical student, in a small town in Russia. He observed that beekeepers and their families remained healthy despite a local cholera epidemic affecting the surrounding communities.
- ✓ Dr. Alexander spent time working with experts to develop a method to feed the bees with the desired herb parts to facilitate the development of a honey bee beehive product which contains the beneficial properties of a special blend of key herbs.
- ✓ In the 1990s Dr. Alexander emigrated to Israel and with the help of state funding, continued his research into the remarkable results of feeding bees different selections of herbs. With time, he went on to develop other products made by honey bees.

# What Makes Our Dietary Supplements TRULY Unique



Honey Bees in nature consume nectar and pollen. They do not consume any other part of the plants.

- Our proprietary technology and know-how utilize a combination of roots, stems, barks, flowers, fruits and leaves from different plants, that are well known for their medicinal properties, to produce feed for the honey bees.
- The foraging bees consume our special feed. Then regurgitate the feed and gradually transform the feed into a honey-like substance by evaporating most of the water from it. Bees continue to regurgitate the feed over and over. This process enables the bees' produce to retain the medicinal properties of each of our plants while adding powerful enzymes from the bees' digestive system, and including in the final produce, thousands of bioactive ingredients.
- The natural phenomenon inside the beehive production process significantly increases the potency of each ingredient in the food that we feed the bees, as they will become more promptly absorbed by the human body.
- Each one of our beehive products is more powerful than the sum of individual medicinal plants used to feed the honey bees, and naturally more holistic (i.e. our LifeMel product in addition to improving chemotherapy patient's blood quality and improving the immune system, LifeMel also significantly improves the patient's quality of life and contains significant amounts of biologically active ingredients, including those with anti-cancer properties).

# ZUF Globus Product Premises

- ✓ Safe
- ✓ 100% Natural remedies
- ✓ High efficacy, backed by clinical trials and independent lab tests
- ✓ Unique in 140 billion dollars plus worldwide dietary supplement market
- ✓ Supplemental to OTC and prescription drugs (if desired)
- ✓ Consumer satisfaction. According to the ISO requirement, we must conduct customer satisfaction surveys annually. In 2017, we received 98.8% customer satisfaction and in 2018, we received 98.2% customer satisfaction.
- ✓ We invest heavily in the R&D, for producing additional unique medicinal remedies.



# Competitive landscape

A close-up photograph of a honeybee on a sunflower head, positioned in the upper right corner of the slide. The background is a soft, warm yellow gradient.

- ✓ **Zuf Globus has no parallel competition.** *We are truly unique.*
- ✓ **OTC and prescription drugs.** *Zuf products are safer, and offer more inclusive remedy than comparable drugs.*
- ✓ **Herbs and other dietary supplements.** *Zuf products are more effective, and offer more comprehensive remedy than the comparable dietary supplements.*
- ✓ **Energy boosting producers.** *Our EnergyMel is safer, caffeine free and nicotine free.*
- ✓ **For some products, Manuka Honey can be considered a competitor –**  
*See the appendix.*





The company complies with all the standards required to manufacture dietary supplements:

**I.S.O. - By the Israeli Standard Institute**

**H.A.C.C.P - Hazard Analysis Critical Control Point**

**G.M.P. - Good Manufacturing Practice**

# Our unique production process



- ✓ Our products are made by honey bees that are directly fed with a mixture of medicinal herbs.
- ✓ In order to obtain the maximal medicinal effect, we use the parts of the plants with the highest concentration of active ingredients.
- ✓ The formulas are result of years of research and are exclusive to Zuf Globus Laboratories.
- ✓ Once the bees consume our feed, the unique process that goes on inside the hive, result in a pure beehive product that contains all the beneficial active compounds from the original herbs in a greatly intensified form; in addition to new properties and large number of enzymes. Our production process ensures maximum absorption of the active ingredients by the human body.

**1 X 5g Spoonful of  
normal honey  
contains 120 active  
ingredients**



**1 X 5g Spoonful of  
MEL contains  
Thousands of  
active ingredients**

# Zuf Globus Beehive Products





# LifeMel

For the chemotherapy adjuvant treatment  
(cancer patients )

- ✓ Significantly improves the blood quality by increasing white blood and red blood cell counts, as well as hemoglobin and platelet levels by stimulating the production of blood cells, painlessly.
- ✓ Rehabilitates and enhances the body's immune system.
- ✓ Diminishes or eliminates side effects induced by chemotherapy and / or radiation treatment.
- ✓ Significantly improves the general feeling of patients undergoing aggressive chemotherapy / radiation treatment.
- ✓ Quickly gets absorbed into the blood stream.
- ✓ Improvement of the blood quality within a short period of time (4 – 7 days).

Main herbs used in the bees diet that produce LifeMel: *Uncaria tomentosa*, *Echinacea purpurea*, *Urtica dioica*, *Calendula officinalis*, *Melissa officinalis*, *Beta vulgaris cicla*, *Eleutherococcus senticosus*, *Vaccinium myrtillus*, *Taraxacum officinale*, *Ficus carica*, *Trifolium pratense*, *Morus alba*, *Chicorium intybus*, *Inula helenium*, *Ribes nigrum*, *Avena sativa*



# GastroMel

For balancing and stabilizing the digestive system

- ✓ GastroMel soothes digestion related discomforts, including indigestion and reflux issues in the upper digestive system caused by an imbalance of stomach acids.
- ✓ GastroMel has an antibiotic effect which kills the helicobacter pylori bacteria which causes peptic ulcer (stomach ulcers) and gastritis.
- ✓ Simulates beneficial and healthy bacteria (Prebiotic)
- ✓ Strongly diminishes symptoms of IBS which often affect the whole digestive system.
- ✓ Soothes inflammation of the stomach lining, ease and soothe digestion related discomforts.
- ✓ Prevents damages caused by prescription drugs done to vital organs such as the liver & kidneys.
- ✓ Contains propolis which releases tension in the bowel leading to constipation.

Main herbs used in the bees diet that produce GastroMel: [Laurus nobilis](#), [Salvia officinalis](#), [Angelica atropurpurea](#), [Hydrangea arborescens](#), [Opuntia ficus Indica](#), [Medicago sativa](#).



# RelaxMel

Soothes nerves and reduces hypertension



RelaxMel is used for calming and balancing the nervous system

- ✓ It reduces hypertension.
- ✓ Assists in stabilizing sleep patterns.
- ✓ It is an aid to ease the mind from worries and tension.
- ✓ RelaxMel is effective within 30 – 60 minutes.
- ✓ The optimal effect will occur following a week of usage.

Main herbs used in the bees diet that produce RelaxMel: *Passiflora incarnata*, *Lavandula angustifolia*, *Avena sativa*, *Vitex agnus-castus*, *Inula helenium*, *Humulus lupulus*.



# FlorMel

For diseases in the mouth

FlorMel an array of dental problems, as well as being a preventive remedy:

- ✓ Caries prevention.
- ✓ Infection prevention and treatment.
- ✓ Healing ulcers and injuries in the mouth.
- ✓ Treating gum inflammation, detaching and bleeding.
- ✓ First aid for tooth aches.
- ✓ Prevents gingival recession.

Main herbs used in the bees diet that produce FlorMel: *Uncaria Tomenstosa*, *Echinacea Purpurea*, *Beta Vulgaris*, *Medicago Sativa*, *Sambucus Nigra*, *Polygonum Aviculare*, *Eleutherococcus Senticosus*, *Eucalyptus Glob*, *Ceratonia Siliqua*, *Salvia Officinalis*, *Hizukmel*, *Propolis*, *Alcohol* and distilled water.



# ClearMel

For repairing damages caused by smoking

- ✓ Recommended for prevention and diminishing damages caused by smoking.
- ✓ Clears the respiratory system's mucosa, including the lungs.
- ✓ Rejuvenates the mucosa and prevents smoking-induced respiratory inflammations.

Main herbs used in the bees diet that produce ClearMel: *Sambucus nigra*, *Polygonum aviculare*, *Pinus sylvestris*, *Plantago major*, *Portulaca oleracea*





# EnergyMel

For enhancing resilience and stamina

- ✓ Energy inducer.
- ✓ Prevents chronic fatigue.
- ✓ Suitable for people engaging in stressful work, both physically and mentally.
- ✓ It is beneficial for people recovering from severe or long term illness as it also supports and helps to speed up the healing process.
- ✓ Caffeine free, and nicotine free.

Main herbs used in the bees diet that produce EnergyMel: *Aralia racemosa*, *Angelica atropurpurea*, *Inula helenium*, *Plantago major*, *Vitex agnus-castus*, *Eleutherococcus senticosus*, *Schisandra chinensis*, *Panax ginseng*



# LadyMel Day & Night

## Balancing female hormone levels



- ✓ Diminishes the symptoms of PMS (pre-menstrual syndrome), and menopause.
- ✓ Spares the need to take hormone replacement therapy.
- ✓ Cools hot flushes.
- ✓ Calms restlessness and unease associated with poor hormonal balance.
- ✓ LadyMel Night assists rest and good sleep patterns which are frequently disturbed by hormonal imbalance.

Main herbs used in the bees diet that produce LadyMels: *Trifolium pratense*, *Vitex agnus-castus* (chaste tree), *Eleutherococcus senticosus*, *Calendula officinalis*, *Matricaria recutita*, *Medicago sativa* (alfalfa), *Mentha piperita*.



# DefenseMel

For enhancing the body's immune system

- ✓ Enhances the immune system activity and allows the body to prevent/better cope with viral or bacterial conditions.
- ✓ Assists in detox process.
- ✓ Suitable for chronic cold.
- ✓ Especially suited as pre-winter preventive treatment by powering the body to better cope with winter illnesses.

Main herbs used in the bees diet that produce DefenseMel: *Aralia racemosa*, *Angelica atropurpurea*, *Inula helenium*, *Plantago major*, *Vitex agnus-castus*, *Eleutherococcus senticosus*, *Schisandra chinensis*, *Panax ginseng*



# VirMel

For improving body's immune systems, after infection is detected

- ✓ VirMel strengthens the body's immune systems. Mainly the unique defense mechanism and creation of antibodies, hence giving the body a better chance of coping with penetrative microorganisms, including viruses.
- ✓ Plants used in the making of VirMel are known for their ability to destroy microorganisms penetrating into the body and for helping the body to produce antibodies and interferon.
- ✓ A synergetic combination of special plants ensure highly effective results in the immune system.

Main herbs used in the bees diet that **produce VirMel**: Uncaria, Echinacea, Beta vulgaris cicla, Medicago sativa, Sambucus nigra, Eleutherococcus senticosus, Punica granatum.



# BronchoMel

For alleviating ailments caused during winters

- ✓ Specifically developed to assist people suffering from bronchiole problems such as a tight chest.
- ✓ BronchoMel is intended for adjuvant treatment respiratory problems: cough, mucous, and respiratory difficulties.
- ✓ Possesses antiviral, antifungal and anti-inflammatory properties.
- ✓ Used as a natural antibiotic and expectorant.

Main herbs used in the bees diet that produce BronchoMel: *Salvia officinalis*, *Laurus nobilis*, *Sambucus nigra*, *Eucalyptus globulus*, *Plantago major*, *Matricaria recutita*, *Rosmarinus officinalis*.



# LaryngoMel

For alleviating winter damages



- ✓ For treating problems in upper respiratory tracts: Larynx and Pharynx.
- ✓ Used as natural antibiotic
- ✓ Has anti-inflammatory and antiviral properties.
- ✓ In laboratory tests it was found to be more efficient than the competing antibiotics.

Main herbs used in the bees diet that produce LaryngoMel: *Melissa officinalis*, *Laurus nobilis*, *Sambucus nigra*, *Beta vulgaris* cicla, *Origanum majorana*, *Calendula officinalis*, *Foeniculum vulgare*



# PotentMel

For improving male potency and fertility

- ✓ Improves male sexual potency and fertility.
- ✓ Designed to act at the root of the problems and not only symptoms that induce sexual dysfunction.
- ✓ For achieving the desirable improvement, PotentMel should be consumed on a regular basis, thus leading to improvement of both sperm quality, and sexual function.

Main herbs used in the bees diet that produce PotentMel: *Panax ginseng*, *Serenoa repens*, *Aralia racemosa*, *Angelica atropurpurea*, *Inula helenium*, *Plantago major*, *Vitex agnus-castus*, *Eleutherococcus senticosus*, *Schisandra chinensis*, *Lepidium meyenii*, *Tribulus terrestris*, *Vitis vinifera*

# APPENDICES

- [Testimonials](#)
- [Clinical Studies](#)
- [Media Coverage](#)
- [Comparison with Manuka Honey](#)



# Testimonials

Greetings,

I, Perl Baruch (90), have been using your product LIFEMEL on a regular basis for a year now. I was hospitalized at the Carmel Medical Center as a result of a collapse of my respiratory system, and a sharp drop in hemoglobin rates in my blood. I was diagnosed with emphysema and during this past year I use an oxygen generator 24 hours a day. My daughter Hagit was exposed to your product LIFEMEL and bought me the honey. Over the past year, I have been using the product regularly, and my hemoglobin level in the blood recovered and stabilized at the normal level. We wish to thank you sincerely for the development of this product, which has improved and still improves my standard and quality of living, without the need for chemical intervention.

Sincerely,

And with great thanks,  
Perl Baruch and Perl Hagit

RelaxMel 120 g.

Elena M.

December 15, 2020

I tried this sweet remedy, after so much stress, nervous tension, insomnia and a considerable increase in accumulated fatigue and I can say that Relax is able to tone the nervous system, dissolving deep tensions, it is an excellent calming and relaxing.

LaringoMel 120 gr.

Carlo M.

November 25, 2020

It is really effective that at night I always have that annoying dryness in the throat that does not make me swallow as well as sleep, before going to bed I take a teaspoon of Laringo and I can sleep without discomfort, I keep it handy when needed.

LifeMel 120 gr.

Michele

November 25, 2020

Excellent product, recommended to me by my Oncologist, at first I was a bit incredulous. I started taking it and after a week I saw the first results. I thank my doctor for telling me about it, I will certainly continue for the duration of the treatments.

# Testimonials

Date: Feb. 1, 2021 11:28

Subject: Life Mel

LIFE MEL honey reduces the need for NEUPOGEN injections in chemotherapy

For the past five months I have been undergoing a chemotherapy course due to an oncological disease. I get treatment every two weeks. From the first treatment white blood cell (WBC) and neutrophil (NP) concentrations in my blood started to drop below normal. So after the third treatment I had two injections of NEUPOGEN, a substance which attracts WBC and NP from the bone marrow. After the injections the level of WBC and NP rose, but did not return to normal.

At a homeopathic pharmacy I was advised to get LIFE MEL honey for the sake of improving the blood. I bought from them one package containing three jars of LIFE MEL honey and started eating the honey daily (teaspoon in the morning and teaspoon in the evening), immediately after a third oncology treatment. After the fourth treatment, they gave me only one injection of NEUPOGEN instead of two. Despite this the concentrations of both WBC and NP returned to normal. After the fifth and sixth treatments I did not have any injections at all, and did one injection only after the sixth treatment.

It should be noted that NEUPOGEN injections are done only when there is no other choice, because this substance forces the body which is weakened as a result of chemotherapy, to pump out WBC and NP from the bone marrow, an action that causes significant damage to the body.

If so, thanks to LIFE MEL honey I have been able to reduce the amount of NEUPOGEN injections to more than double and reduce the damage to the body considerably.

Regards,

Joseph R.

Hello Eric,

I agree to use my letter for all your needs with my abbreviated name "Joseph R."

DefenseMel 120 gr.

Barbara G.

November 25, 2020

I am prone to colds and getting it as usual... I tried, given the benefits of another VitalMel product on my daughter, to use DefenseMel regularly.

I must say that at the first symptoms, I stop the cold in the bud by immediately taking a teaspoon.

# Clinically Studied

Clinical studies have shown how LifeMel helps support a healthy immune system.



LifeMEL may help make life easier for chemotherapy patients

<https://www.youtube.com/watch?v=a5SZzoR-NL8>



Full Interview with the researchers

<http://www.youtube.com/watch?v=S-kAhknkerk>

# Media Coverage



Dr. Chris on ITV (England)

<https://youtu.be/TkJ25rNPu3Y>



Zuf Globus on Israeli Health channel

<https://youtu.be/cS5HqKFbFsw>



# Comparative characteristics of “ZUF GLOBUS” and “Manuka honey” Dietary Supplements



VS





## Manuka Honey

Ultra Premium Manuka Honey MGO 829

## Zuf Globus Products

<b>Manuka claims</b>	<b>Description</b>	<b>Product</b>
For immune system support.	Normalizes blood composition, including increasing leucocyte count, as well as neutrophil and thrombocyte counts and improving blood hemoglobin levels. Improves quality of life.	<b>LIFEMEL</b>
Health and digestive system.	GASTOMEL serves to balance and stabilize the digestive system. It is intended to balance the digestive system, treat gastritis and stomach ulcers. These qualities of GASTOMEL are achieved by feeding bees a mix of plants known for their antibiotic qualities and effective in combating Helycobacter. These plants have an anti-inflammatory and anaesthetic effect, aid in healing ulcers and protect the mucous membrane. Bacteria do not develop a resistance to this product. It does not suppress probiotic bacteria.	<b>GASTOMEL</b>
Helps with coughs, throat ache, supports health in winter	BRONCHOMEL is indicated for acute and chronic bronchitis, pneumonia, aids in calming coughs and mucus removal.	<b><u>BRONCHOMEL</u></b>

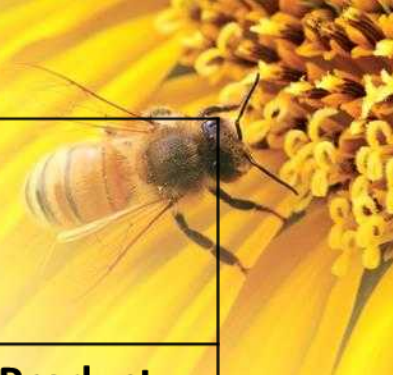


<b>Manuka Honey</b> Ultra Premium Manuka Honey MGO 829	<b>Zuf Globus Products</b>	
<b>Manuka claims</b>	<b>Description</b>	<b>Product</b>
Source of Life Support	Energymel – chronic fatigue, depression, heavy physical labor, recovery, recovery after severe illness	<b><u>Energymel</u></b>
Manuka has no such effect	A special women's complex, including Ladymel Day + Ladymel + Night. The plants used in preparing this product may aid in solving such specific women's problems as irregular periods, menopause, excessive sweating, irritability, depression, and PMS.	<b><u>Ladymel</u></b>
Manuka has an antibiotic effect	Laryngomel – For upper respiratory system (throat and esophagus) problems, e.g. laryngitis, pharyngitis, glossitis. Used as a natural antibiotic, has an anti-inflammatory and antiviral effect. Has a local anesthetic effect. Bacteria do not develop a resistance to this product.	<b><u>Laryngomel</u></b>

# Manuka Honey

Ultra Premium Manuka Honey MGO 829

# Zuf Globus Products



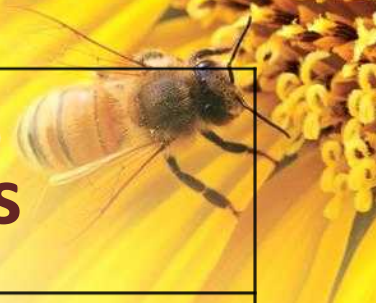
Manuka claims	Description	Product
Manuka has no such effect	Defenseemel – for immune system reinforcement. Reinforces the immune system and helps the body prevent and heal from infectious diseases, helps in clearing toxins from the body. Suitable for persons with chronic cold as well as for prevention of colds.	<b><u>Defenseemel</u></b>
Manuka has no such effect	Virmel – for reinforcing the body's specific defense system against viruses or other microorganism that attempt to enter, or have already entered, the body.	<b>Virmel</b>
Manuka has no such effect	Potentmel – for improving male function and fertility. For regular use. It helps in treating problems that cause a loss of sexual function. To achieve regular improvement, use regularly for an extended period of time, which improves both sperm quality and activity and sexual function.	<b>Potentmel</b>
Manuka has no such effect	Relaxmel – relaxes, eases blood pressure, reduces stress, prevents insomnia, non-addictive.	<b><u>Relaxmel</u></b>



# Manuka Honey

Ultra Premium Manuka Honey MGO 829

## Tsuf Globus' products Zuf Globus Products



<b>Manuka claims</b>	<b>Description</b>	<b>Product</b>
Manuka has no such effect	Clearmel – A special product for reducing harm caused by smoking or employment in smog condition. Helps in clearing the lungs of resins and other harmful components of smoke.	<u><b>Clearmel</b></u>
Manuka has no such effect	Flormel – A unique hive product, a special infusion developed by the scientists at Tsuf Globus laboratory for prevention and treatment of oral cavity disorders. Produced using a special Tsuf Globus technology. Other hive products and plant extracts used in traditional medicine for treatment of oral cavity disorders caused by fungi, bacteria, and viruses are added to this product. Flormel may help with: <ul data-bbox="687 928 1275 1135" style="list-style-type: none"><li>• Gum inflammation, detaching and bleeding</li><li>• Ulcers and injuries in the mouth</li><li>• Infection prevention and treatment</li><li>• First aid for dental pain</li></ul> Caries prevention	<u><b>Flormel</b></u>

# What's The different between the companies?



All major New Zealand companies claim, in general terms, that **manuka honey** has unequaled antibacterial, antiviral, and anti-inflammatory properties, reinforces the immune system, fights infections and bacteria, treats throat infections as well as helps with digestive issues. These claims are not connected to a specific medical problem.

**Zuf Globus** products are made to mitigate or to eliminate specific medical problems. We feed honey bees with a broad variety of active ingredients from various types of plants. Each plant is known for specific medicinal properties. When Manuka honey is made, the bees may only use nectar and pollen.

- Our technology enables us to feed the honey bees with combinations of the most active ingredients of selected plants, using their leaves, flowers, fruits, seeds, roots, and barks. Therefore, unlike in Manuka honey, the bee prepares our product from a much larger amount of active ingredients.
- The accumulation of active ingredients in the *Leptospermum* plant, which provides nectar for Manuka honey, is based on weather and other factors, i.e. it is not possible to predict what activity the Manuka honey will have this year.
- With **Zuf Globus** production technology, it is possible to achieve a highly precise dose of active ingredients in making the bee feed, which allows us to predict the type of hive product we will receive with a high degree of certainty.
- According to an independent lab test of best honey products, our product **LifeMel** shows higher degree of activity than **Manuka** MGO UMF 10 A.

## Comparative Antibacterial Analysis

Independent laboratory, Germany

For your view are the lab results conducted by one of the most reputable laboratories in Germany. We found the report by coincident as we were not asked for participation. The original document is in PDF format.

Tests were conducted on our produce [Life Mel](#)., and popular brands like [Manuka Honey](#) and [Bashkir](#) . The sample with the largest diameter (millimeters) indicates having the highest antibacterial activity.

### Results:


1. **Life Mel** Shows the highest antibacterial action – 21.9mm 34.2mm (Staphylococcus aureus) and 11.0mm 21.2mm (Escherichia coli)
2. **Bashkir Bee Honey** - 17.8mm 25.8mm (Staphylococcus aureus) and 8.5mm 16.5mm (Escherichia coli)
3. **Manuka Honey (UMF 10+)** - 14.6mm 20.0mm (Staphylococcus aureus) and 11.5mm 15.2mm (Escherichia coli). The lowest antibacterial activity among the three samples.



## Independent lab: Comparative antibacterial analysis

Furthermore, the tests show that **Bashkir Bee Honey batch (D080301J)** scored higher than [Manuka Honey \(UMF 10+\)](#), but the highest score is given to a different brand, [Life Mel](#).

	Diameter of the inhibition zone (in mm)			
	Staphylococcus aureus		Escherichia coli	
	<u>moulded-in</u>	<u>overlaid</u>	<u>moulded-in</u>	<u>overlaid</u>
<a href="#">Life Mel</a>	21,9	34,2	11,0	21,2
<a href="#">Bashkir</a>	17,8	25,8	8,5	16,5
<a href="#">Manuka Honey (UMF 10+)</a>	14,6	20,0	11,5	15,2



**Conclusion:** Results of the independent lab tests, allow us to conclude that the antibiotic activity of **LifeMel** is higher than one of the **best types of Manuka honey.**

Visit us at [www.zufglobusUSA.com](http://www.zufglobusUSA.com)

For further information, please contact David Davidson +972-523-730868.