

Invi Swing - open space solution



ability to regulate and direct the air flow



Perfect solution for sweating



Easy access to service



Ability to operate through cellphone



ACP
אביזרי מיזוג אוויר

Factory: Moshav Yesodot
P.O. Box 64 Emek Sorek 7681000
Tel: 03-6874963/4, Fax: 1533-6871031
acp@acp-ltd.co.il

David Turgeman:
mobile: +972-52-888-5939
David@cool.co.il

www.acp-ltd.co.il



FAN MODE -90° -45° -30°

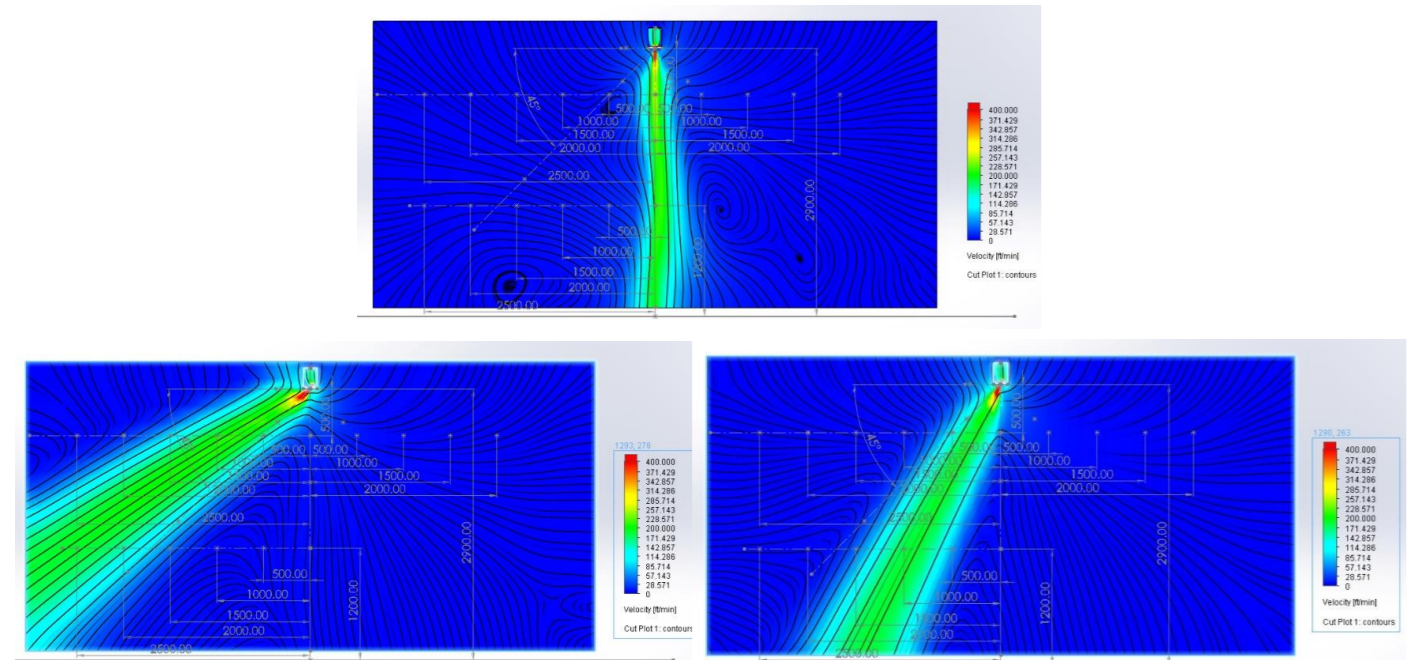


FAN MODE 45° ANGLE			4ft FROM FLOOR							
INVI_SWING	SIZE-3.3Ft	Active 0.03	FPM 0ft	FPM 1.5ft	FPM 3.3ft	FPM 5ft	FPM 6.5ft	8.2ft		
100.0	438.0	6.2	9.7	0.7	6.0	11.0	53.0	100.0	87.0	
200.0	879.0	33.0	14.0	4.8	2.0	3.0	55.0	150.0	188.0	
300.0	1319.0	78.0	22.0	7.1	5.0	3.0	60.0	205.0	276.0	
400.0	1758.0	142.0	33.0	9.4	7.5	4.5	66.0	250.0	365.0	
500.0	2201.0	225.0	43.0	11.6	9.5	6.4	92.0	320.0	459.0	

FAN MODE 30° ANGLE			4ft FROM FLOOR							
INVI_SWING	SIZE-3.3Ft	Active 0.03	FPM 0ft	FPM 1.5ft	FPM 3.3ft	FPM 5ft	FPM 6.5ft	8.2ft		
100.0	342.0	0.8	0.0	2	33.0	87.0	7.0	1.7	1.4	
200.0	693.0	11.6	0.0	3.7	71.0	180.0	42.0	2.5	2.0	
300.0	1037.0	29.0	16.8	6.1	100.0	266.0	64.0	2.8	3.1	
400.0	1381.0	53.0	27.0	8.3	136.0	350.0	98.0	2.9	4.1	
500.0	1727.0	85.3	37.0	10.1	161.0	437.0	115.0	2.9	5.2	

FAN MODE 90° ANGLE			4ft FROM FLOOR							
INVI_SWING	SIZE-3.3Ft	Active 0.03	FPM 0ft	FPM 1.5ft	FPM 3.3ft	FPM 5ft	FPM 6.5ft	8.2ft		
100.0	286.0	0.0	0.0	101	6.0	2.8	1.5	0.8	0.4	
200.0	570.0	3.1	3.1	185	14.0	7.5	4.0	2.0	1.1	
300.0	856.0	10.1	8.1	298	20.8	9.5	5.0	3.0	2.0	
400.0	1141.0	20.0	9.2	392	31.0	6.0	3.7	2.9	2.6	
500.0	1427.0	32.0	14.3	526	31.0	14.0	4.2	2.7	3.4	

The data was measured under monitored laboratory conditions. There may be deviations in noise levels in different field conditions. The data was measured in a simulation where there were no changes in temperature.



COLD MODE -90° -45° -30°

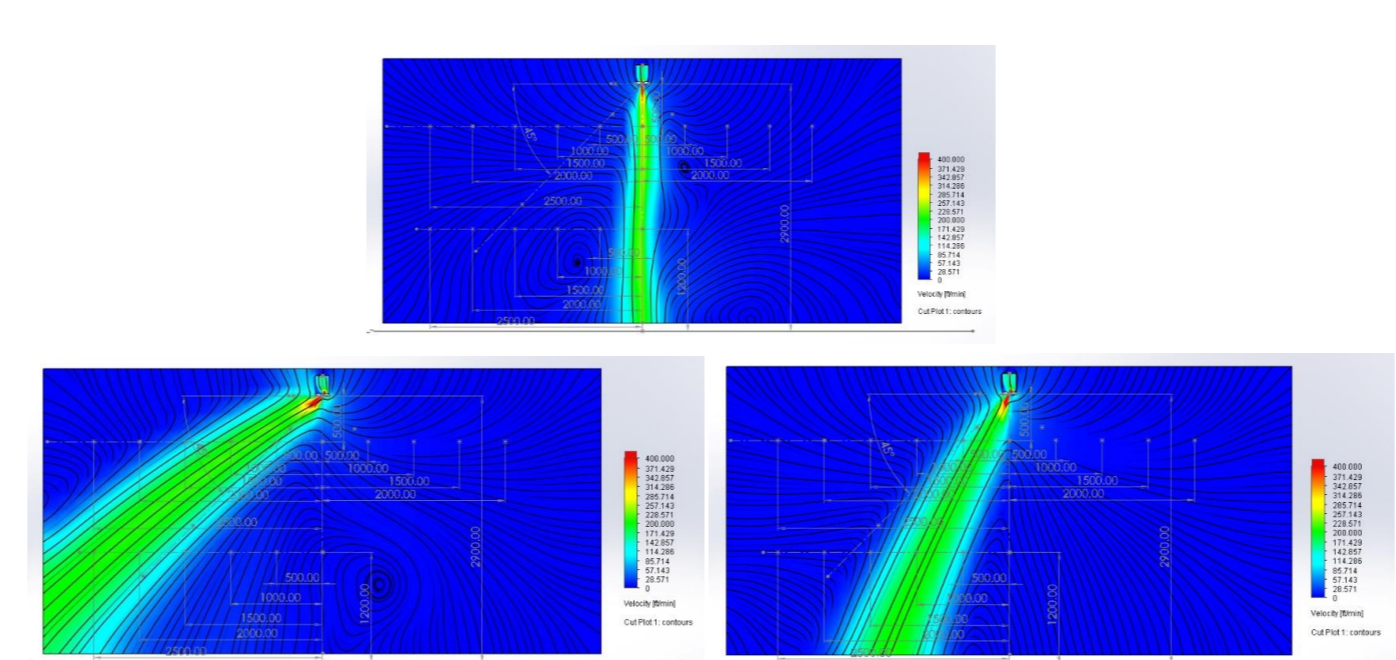


COLD MODE 45° ANGLE			4ft FROM FLOOR							
INVI_SWING	SIZE-3.3Ft	Active 0.03	FPM 0ft	FPM 1.5ft	FPM 3.3ft	FPM 5ft	FPM 6.5ft	8.2ft		
100.0	439.0	6.4	8.8	0.9	15.0	30.0	106.0	94.0	6.1	
200.0	880.0	34.0	14.4	2.2	9.7	15.0	81.0	181.0	198.0	
300.0	1320.0	80.0	23.5	3.4	5.2	12.3	81.3	228.1	293.0	
400.0	1762.0	145.0	33.6	10.4	6.5	2.8	103.0	286.4	381.6	
500.0	2205.0	230.0	43.0	12.9	8.7	5.3	109.0	352.0	472.6	

COLD MODE 30° ANGLE			4ft FROM FLOOR							
INVI_SWING	SIZE-3.3Ft	Active 0.03	FPM 0ft	FPM 1.5ft	FPM 3.3ft	FPM 5ft	FPM 6.5ft	8.2ft		
100.0	344.0	0.9	0.0	3.1	72.0	78.0	3.1	2.2	1.7	
200.0	693.0	11.8	0.0	3.7	88.0	190.5	21.1	3.2	2.5	
300.0	1037.0	29.0	16.3	6.2	126.1	268.3	56.9	4.3	3.5	
400.0	1382.0	55.0	26.5	8.4	144.8	361.0	86.9	4.4	4.3	
500.0	1728.0	87.0	37.0	10.1	166.7	453.0	123.0	4.8	5.4	

COLD MODE 90° ANGLE			4ft FROM FLOOR							
INVI_SWING	SIZE-3.3Ft	Active 0.03	FPM 0ft	FPM 1.5ft	FPM 3.3ft	FPM 5ft	FPM 6.5ft	8.2ft		
100.0	286.0	0.0	0.0	120	6.9	3.5	1.8	1.0	0.5	
200.0	570.0	3.1	3.4	219	11.6	5.1	2.5	1.1	0.6	
300.0	856.0	10.4	8.8	327	16.5	8.8	5.4	2.4	1.4	
400.0	1141.0	20.5	9.0	416	28.0	14.5	7.6	4.4	2.6	
500.0	1427.0	33.5	13.4	529	29.0	14.9	6.9	4.0	3.1	

The data was measured under monitored laboratory conditions. There may be deviations in noise levels in different field conditions. The data was measure in a simulation of 15 degrees Celsius, in an area of 25 degrees Celsius.



HEAT MODE -90° -45° -30°



HEAT MODE 45° ANGLE			4ft FROM FLOOR							
INVI_SWING	SIZE-3.3Ft	Active 0.03	FPM 0ft	FPM 1.5ft	FPM 3.3ft	FPM 5ft	FPM 6.5ft	8.2ft		
100.0	436.0	5.9	5.0	2	2.4	2.4	1.9	1.7	1.7	
200.0	877.0	31.6	14.6	4.4	5.3	4.4	5.2	24.0	64.0	
300.0	1314.0	74.5	23.0	6.1	7.6	6.0	20.4	116.5	213.4	
400.0	1753.0	135.1	32.0	7.8	9.5	7.4	32.0	195.5	319.5	
500.0	2193.0	213.9	44.0	9.7	11.3	8.5	60.2	259.1	415.4	

HEAT MODE 30° ANGLE			4ft FROM FLOOR							
INVI_SWING	SIZE-3.3Ft	Active 0.03	FPM 0ft	FPM 1.5ft	FPM 3.3ft	FPM 5ft	FPM 6.5ft	8.2ft		
100.0	343.0	0.5	0.0	2.1	3.3	3.0	2.6	2.4	2.2	
200.0	693.0	11.0	0.0	3.5	15.7	141.0	107.3	40.6	27.4	
300.0	1036.0	27.6	19.5	5.7	69.7	245.0	112.5	19.8	17.2	
400.0	1380.0	50.9	26.3	7.1	111.0	339.9	133.6	11.2	12.1	
500.0	1725.0	80.9	32.0	9	146.0	423.0	148.5	8.9	10.5	

HEAT MODE 90° ANGLE			4ft FROM FLOOR							
INVI_SWING	SIZE-3.3Ft	Active 0.03	FPM 0ft	FPM 1.5ft	FPM 3.3ft	FPM 5ft	FPM 6.5ft	8.2ft		
100.0	286.0	0.0	0.0	3.8	2.7	2.0	1.0	0.4	0.3	
200.0	570.0	2.9	3.6	30	26.0	22.0	10.4	5.8	3.9	
300.0	856.0	9.6	8.3	150	83.0	30.0	14.8	3.7	2.9	
400.0	1141.0	19.0	9.3	165	65.7	26.6	30.4	27.8	3.7	
500.0	1426.0	31.1	14.6	248	35.0	24.8	32.1	33.3	3.3	

The data was measured under monitored laboratory conditions. There may be deviations in noise levels in different field conditions. The data was measure in a simulation of 40 degrees Celsius, in an area of 25 degrees Celsius.

