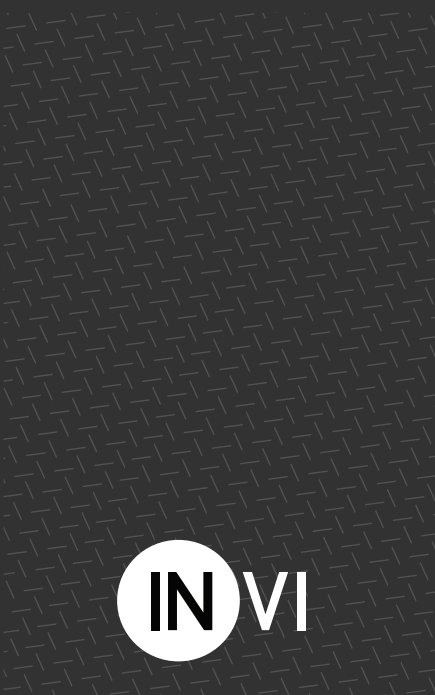




**ACP**

Air conditioning products

**Product  
Catalogue  
2023**



# Our Values:



Integrity and tradition



Innovation



Service



Professionalism



Commitment



Made in Israel



ISO  
9001



ACP

Air conditioning products

Since 1965, ACP has been creating a trendy language for air conditioning vents. The company, owned by the collective settlement Moshav Yesodot in Israel, continues generations of development, design, operations, manufacturing, and marketing people leading technical, design and decorative innovation.

Over the years of its activity, ACP has transformed air conditioning accessories from a product that in the past designers would have tried to conceal, into a unique and interesting decorative design item in rooms, stores, and air-conditioned spaces.

As part of maintaining leadership and innovation in the field, ACP holds the development company INVI, specializing in product design, planning of air conditioning, and solutions for architects.

Company customers include architects, interior designers, HVAC contractors and consultants, and entrepreneurs who benefit from exceptional, caring, reliable and professional service combining a smile and out-of-the-box thinking.

problem



idea



Solution

IN VI

**Take a look  
at our premium  
products**

From page 42 >

# Hidden SLOT

## SLOT- h

Linear air vent made from aluminum, used for air supply, with adjustable fins up to 180° angle.

Can be produced in different lengths and widths upon request.



### Dimensions:

- Length and width as required.

### Model:

- Hidden SLOT – 1 slot Sh-1
- Hidden SLOT – 2 slots Sh-2

### Color:

- Black



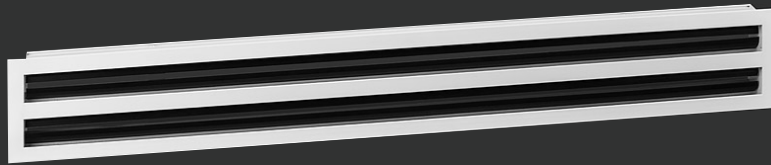




# SLOT

Linear air vent made from aluminum, used for air supply, with adjustable fins up to 180° angle.

Can be produced in different lengths and widths upon request.



## Dimensions:

- Length and width as required
- Made from one unit of up to 500 cm
- Width affects the number of slots and air delivery

## Frames:

- Depth 5 cm
- Without margins
- Frame 1.2 cm
- Frame 2 cm

- Depth 2.5 cm
- Frame 0.8 cm
- Frame 1.5 cm

## Depth:

- Available with depth up to 5 cm
- Available with depth up to 5 cm

## Model:

- SLOT with several slots
- Shallow depth slot (2.5 cm) SKD
- Arc slot – SR
- Concave / convex slot – SC
- Angular slot with miter joint (Gehrung) – SAG
- SLOT without margins fitted to hidden frame – SWM
- SLOT with integrated lighting – SLG
- SLOT with deflecting blades

## Finish:

- Painted according to RAL catalog

## Installation:

- With concealed springs or screws
- Grills longer than 500 cm – with connectors









▲ SLOT without margins fitted to carpentry SWM

SLOT Angular SAG ▶



Mitre cutting+INVI LINE 2 ▶



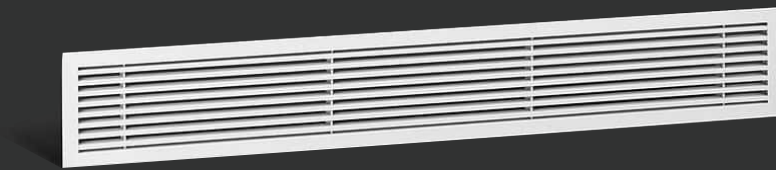
◀ SLOT with three slots

SLOT Arc SR ▶



# DECOR

Decorative linear air vent made from aluminum used for air supply or exhaust. Fixed blades at right angles, 0° or 15°. Can be produced in different lengths and widths upon request.



## Dimensions:

- Length and width as required
- Fabricated from one piece up to 480 cm

## Frames:

### Without frame

- Fitted to carpentry flush with wall
- 0.5 cm
- 0.8 cm
- 1.5 cm for DMC model height 9.5 only
- 1.7 cm
- 2.75 cm

## Installation:

- With concealed springs
- Long grilles of up to 480 cm – with connector sectors

## Model:

- Decor
- Decor standard width 9.5 DMC
- Decor Arc DR
- Decor convex / concave – DC
- Decor angular with miter joint (Gehrung) DAG
- Decor without margins fitted to hidden frame DWM
- Decor carpentry DGN
- Decor with deflecting blades DLH
- Decor removable + filter decorative for air extraction DFR
- Decor opening on hinge + filter decorative for air extraction DFO
- Decor opening on hinge with hidden clicks + filter decorative for air extraction DKSFO

## Finish:

Painted according to RAL catalog







▼ Decor removable DFR



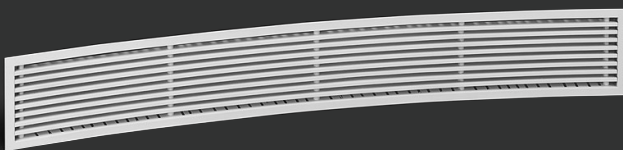
▼ Carpentry decoration DGA



▼ Decoration with black partitions



▼ Decor convex/concave DC

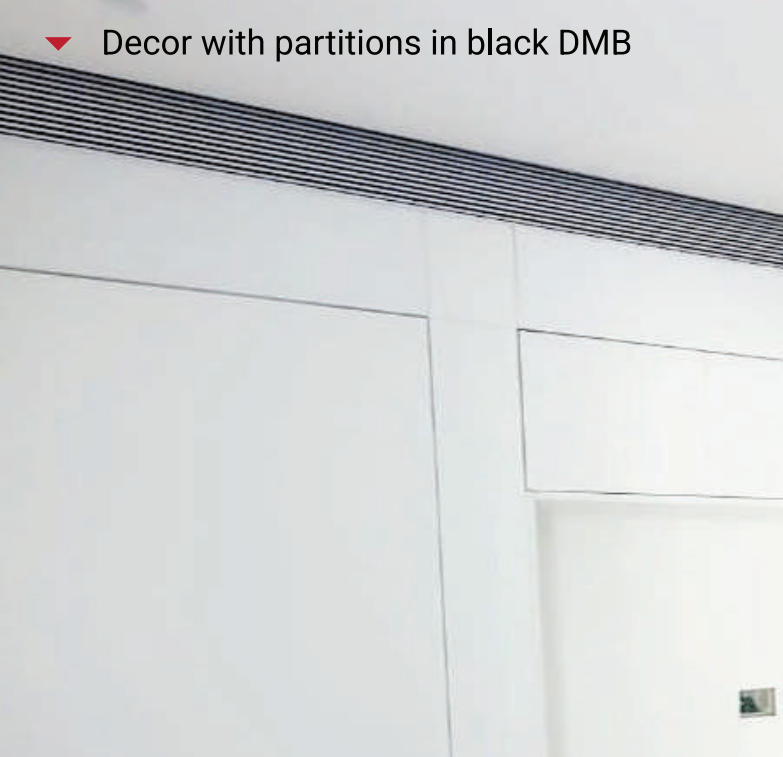


▼ Decor angular DAG





▼ Decor with partitions in black DMB



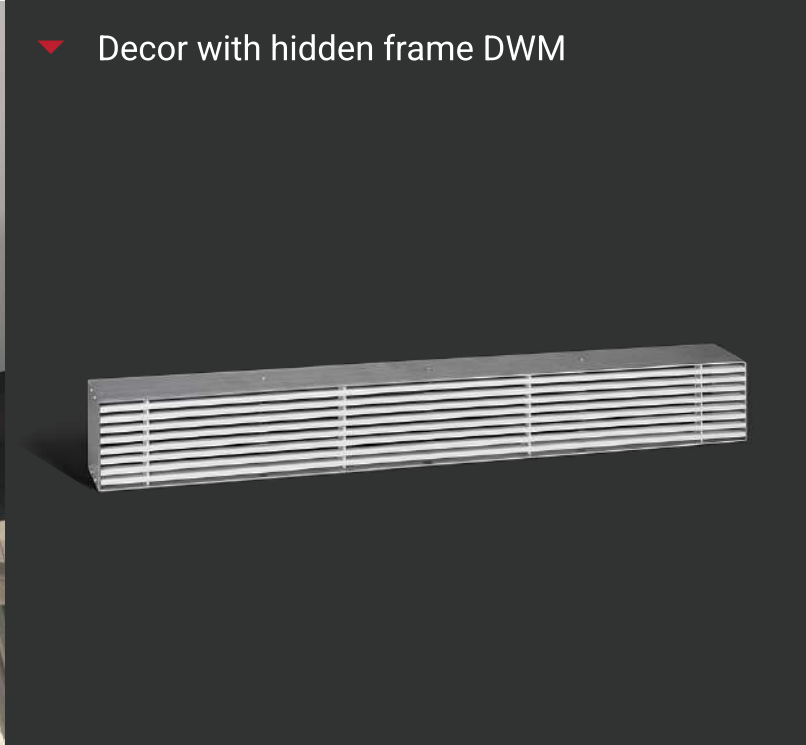
▼ Decor angular DAG



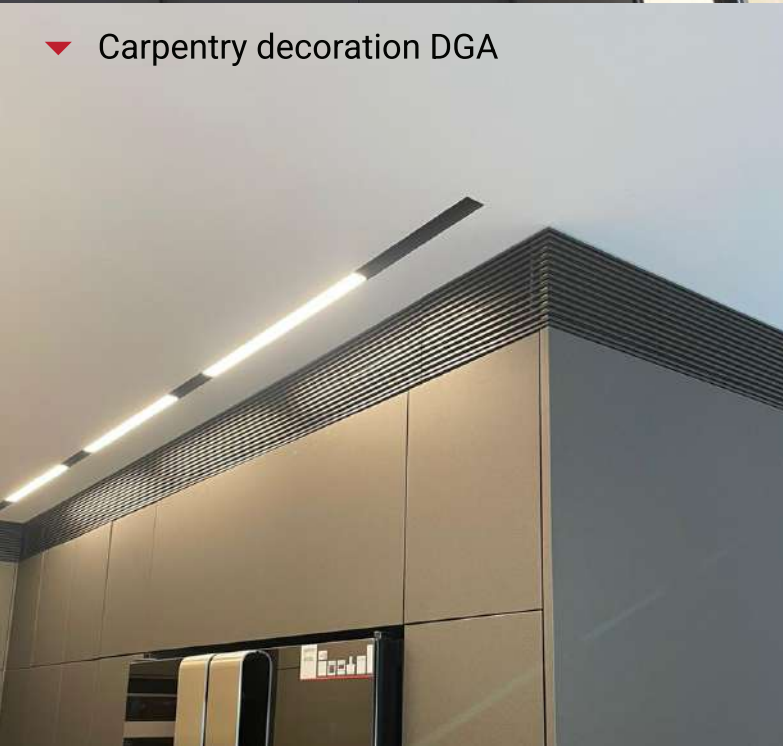
▼ Decor angular DAG



▼ Decor with hidden frame DWM



▼ Carpentry decoration DGA



▼ Decor arc DR

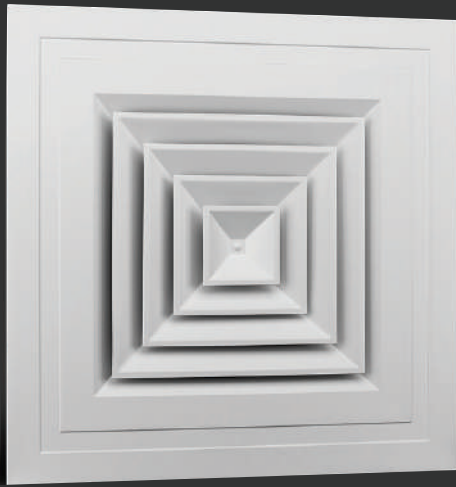


# Tile Vent

## MR

Ceiling air vent made from aluminum used for air supply, with either straight or rounded blades.

A quantity regulator can be added to regulate the amount of a.



### Dimensions:

- Neck dimensions (inch)
- 18\* 18 15\* 15 12\* 12 9\* 9 6\* 6
- Exterior dimensions in cm
- 60.5 \* 60.5 60 \* 60 59.5 \* 59.5
- Available in different directions (MR1, MR2, MR3, MR4)
- Length and width as required

### Types of frames:

- Flat tile vent MR
- Half sunk tile vent MRFL

### Models:

- Tile vent with rounded blades of up to 3.5 m height MR
- Tile vent with straight blades of up to 4.5 m height MRZ
- Tile vent with straight delivery core MRH
- Tile vent with integrated LED lighting MR
- Tile vent for lighting completion MR MLED

### Technical data:

- Technical data – identical to data of ceiling model LP according to the neck dimension

### Finish:

- Painted according to RAL catalog



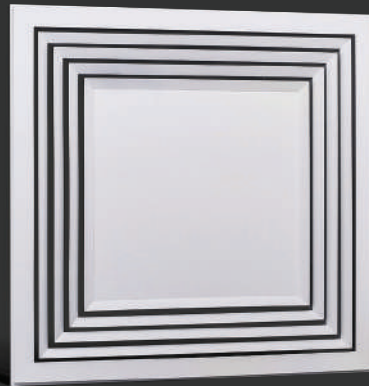




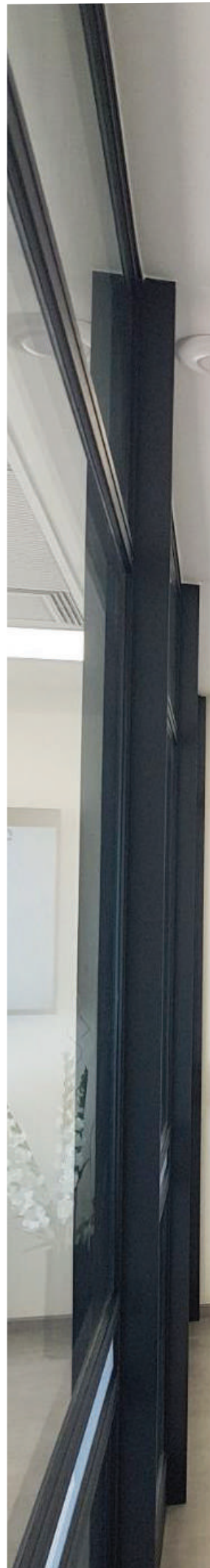
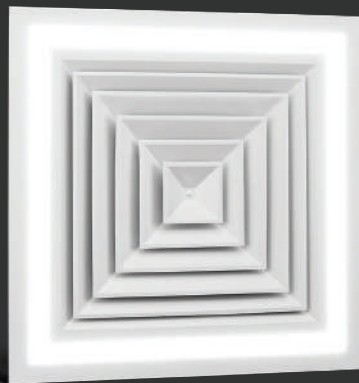
**Tile vent  
peripheral slot  
SLOT-SW 4**



**Tile vent  
peripheral  
stripline  
STRIP-W**



**Tile vent  
integrated  
LED lighting  
MR-LED**



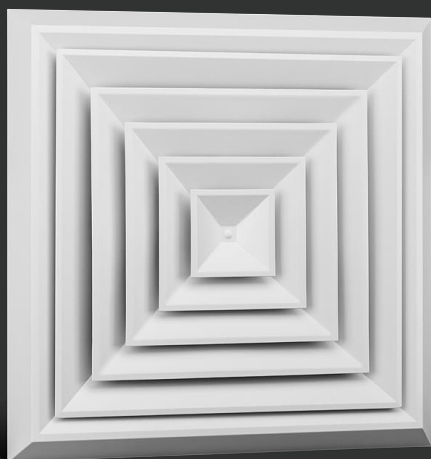




# Ceiling Vent

## TRP

Ceiling air vent made from aluminum used for air supply with either straight or rounded blades. Can be produced in different lengths and widths upon request.



### Dimensions:

- Neck dimensions (inch)  
15\* 15 12\* 12 9\* 9 6\* 6  
24\* 24 21\* 21 18\* 18
- Rectangular model  
Length and width as required

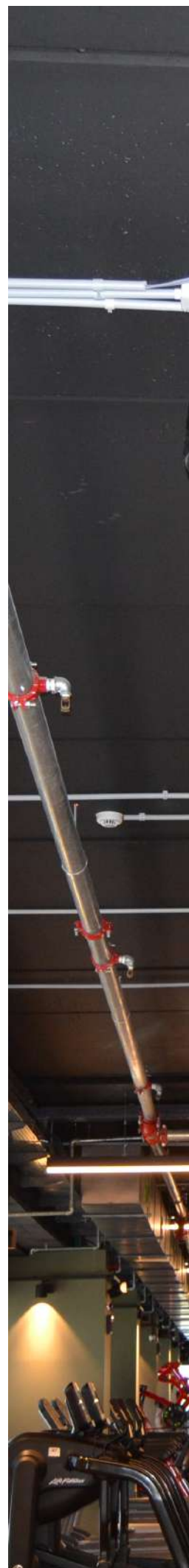
### Types of frames:

- L – Frame with flat margins flush with ceiling – LZ/LH/LP
- V – Frame with margins protruding from the ceiling line – VZ/VH/VP
- A – Frame with narrow specially designed margins – AZ/AH/AP

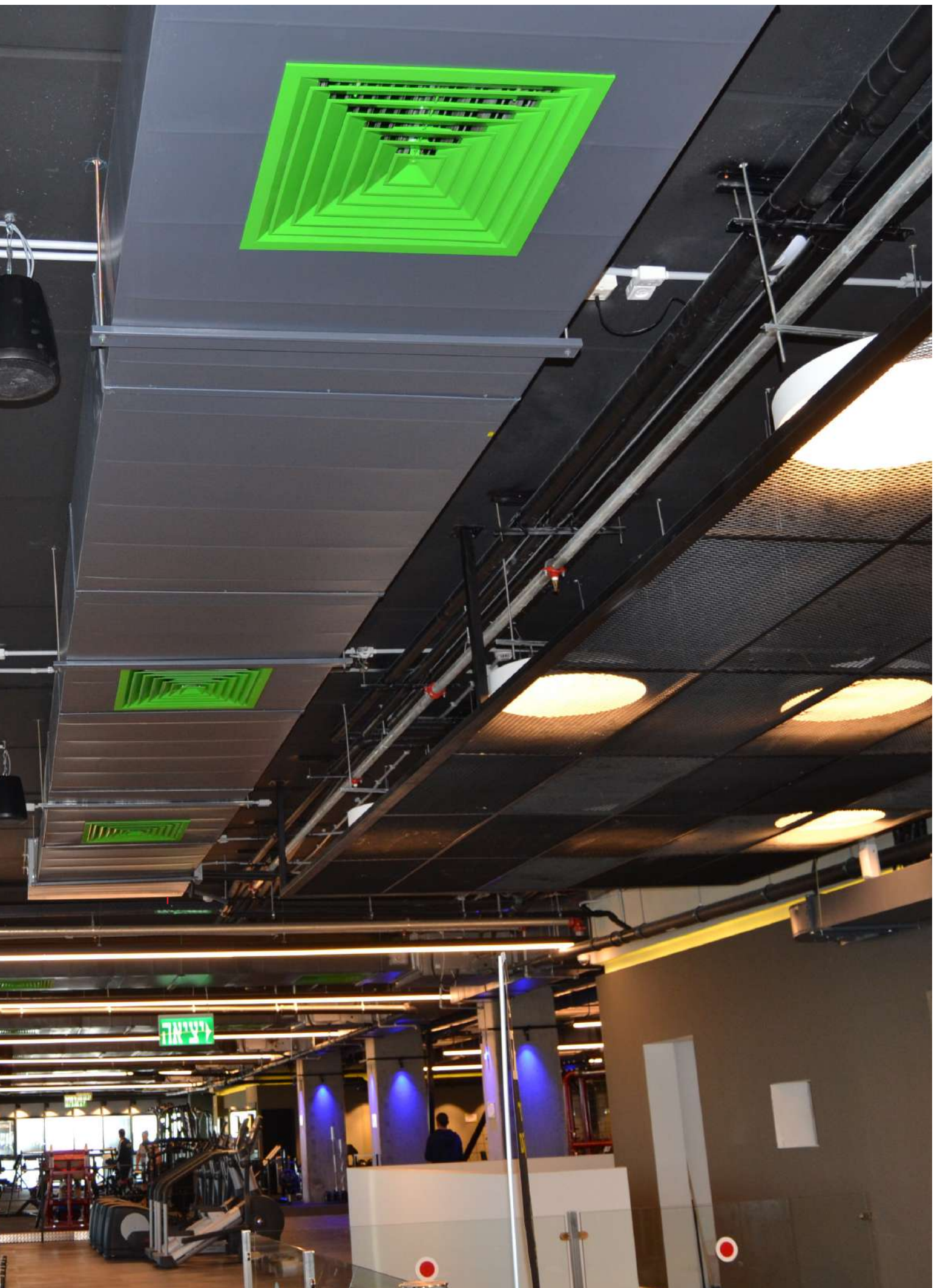
- The core can be easily detached from the frame for ease of installation; an air quantity regulator can be connected
- P – rounded blades
- Z – Straight blades
- H – Crisscross blades

### Finish:

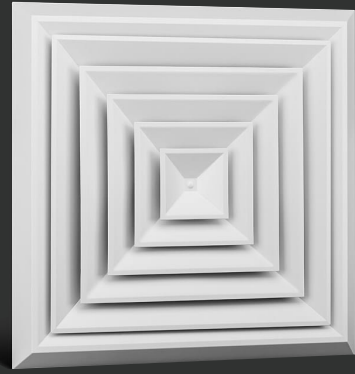
- Painted according to RAL catalog



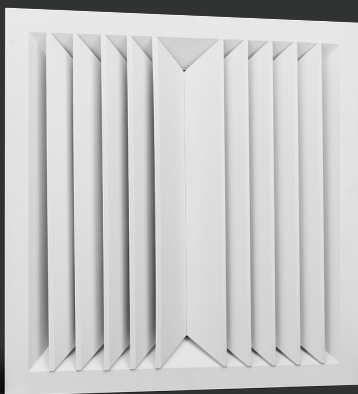




# Ceiling

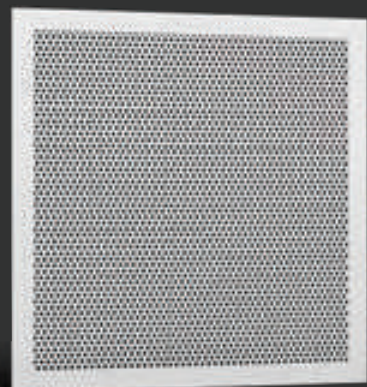


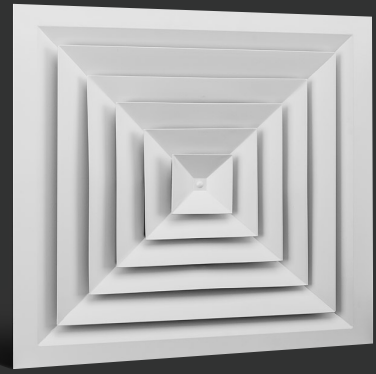
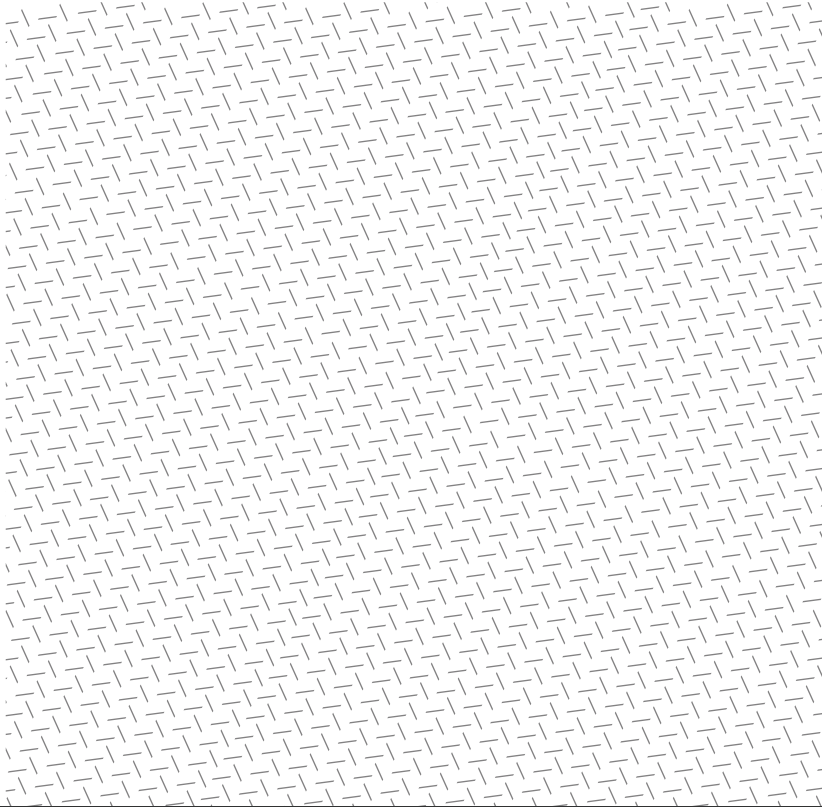
- ▲ VP Frame with margins protruding from ceiling line



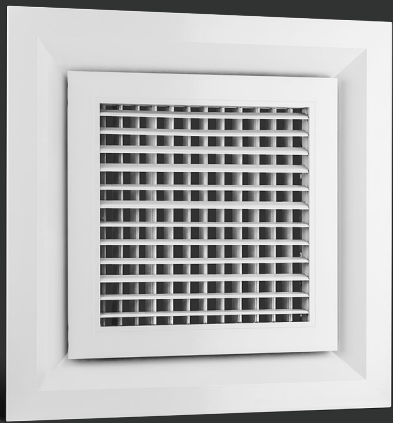
- ▼ Prforite perforated air vent

- ▲ Two-way ceiling ventilation airlock



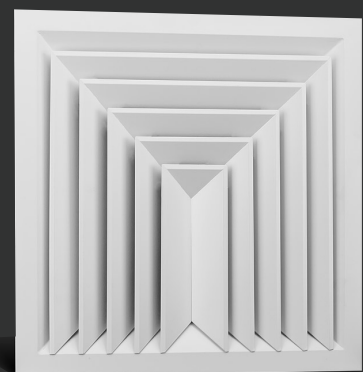


▲ LP Frame with flat margins  
flush with ceiling



▼ Three-way ceiling ventilation airlock

▲ Tile vent with core, straight  
delivery MRH

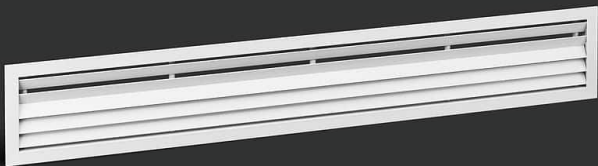




# STRIP LINE STRIP

Ceiling mounted air vent made from aluminum used for supply or exhaust, with fixed blades at 45° angle.

Can be produced in different lengths and widths upon request.



## Dimensions:

- Length and width as required

## Frames:

- 0.5 cm
- 1 cm
- 1.7 cm
- 2.75 cm

## Model:

- STRIP-1 one-directional strip line
- STRIP-2 two-directional strip line
- STRIP-W4 peripheral strip line

## Finish:

- Painted according to RAL catalog

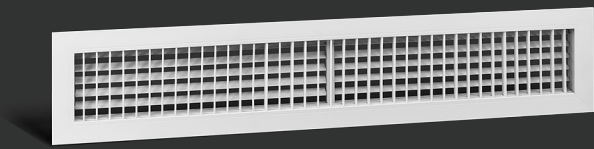






# Air Supply SY

Wall vent made from aluminum used for air supply with double blades (Grid) ensuring optional air flow direction in four directions. A quantity regulator can be added in order to adjust the quantity of air delivered.



## Dimensions:

- Length and width as required

## Frames:

- 1.7 cm
- 2.75 cm

## Model:

- Supply SY
- Supply long front short rear blade black SY-STD
- Supply conformant to round duct SY-M
- Supply Eilat – can be regulated by handle SYEL
- Supply concave/convex for wall with arc SYK
- Supply with service door SYS
- Supply combined SY-MS

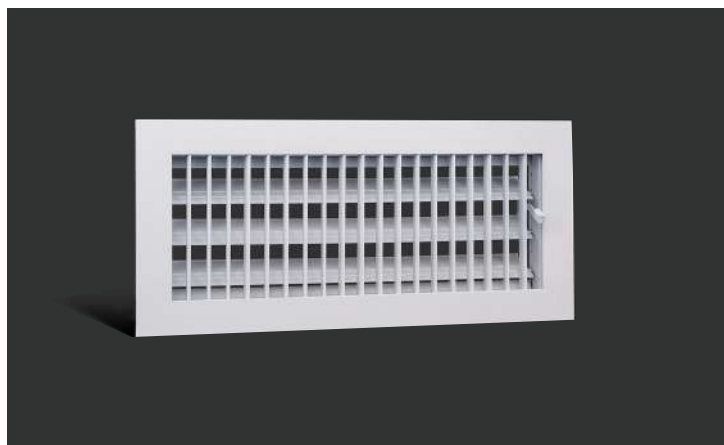
## Finish:

- Painted according to RAL catalog

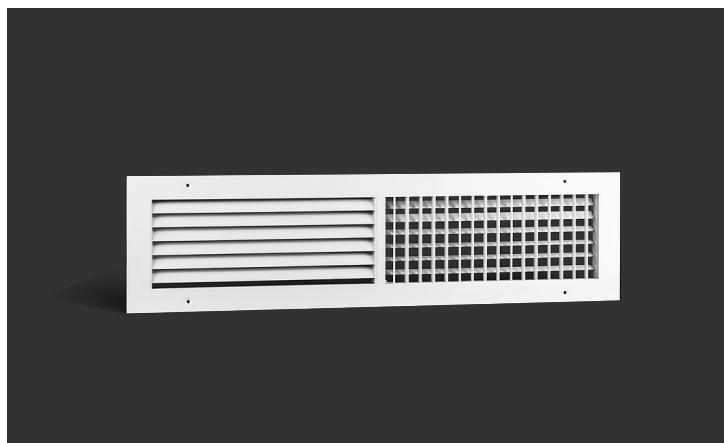
## Installation:

- Screws same color as grille
- Springs

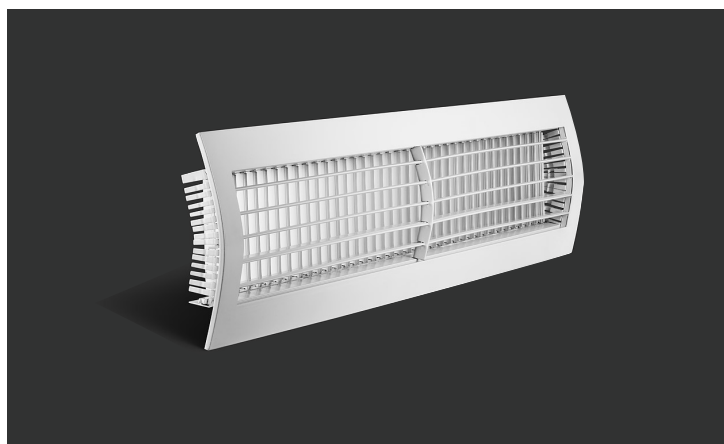




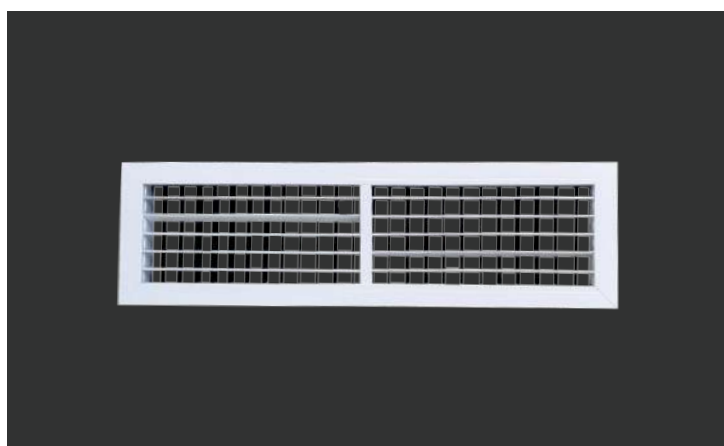
▲ Supply Eilat Model SYEL



▲ Supply combined SY-MS



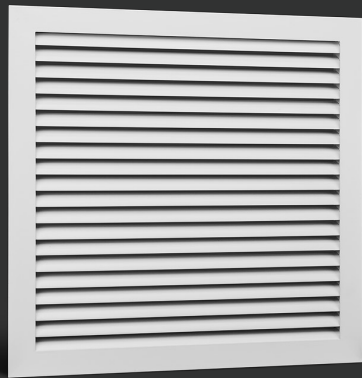
▲ Supply conformant to round duct SY-M



▲ Supply long front short rear blade black SY-STD

# Return Air HK

Air vent made from aluminum used for air extraction.  
With fixed blades at 45° angle.  
A quantity regulator can be added in order to adjust the quantity of air delivered.



## Dimensions:

Length and width as required

## Frames:

- 1.7 cm
- 2.75 cm

## Model:

- Return air fixed HK
- Return air conformant to round duct HK—M
- Return air removable + filter HK-FR
- Return air opening on hinge + filter HK-FO
- Return air opening on hinge with hidden clicks + filter HK-SFO

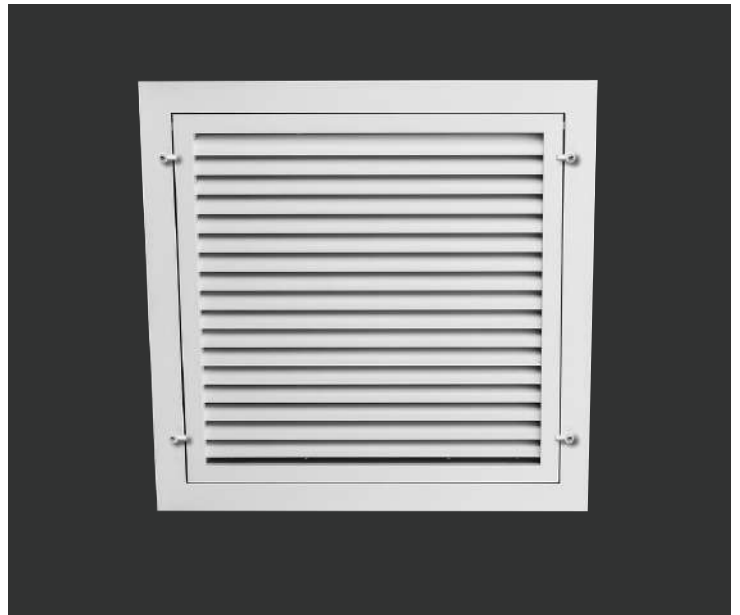
## Finish:

- Painted according to RAL catalog

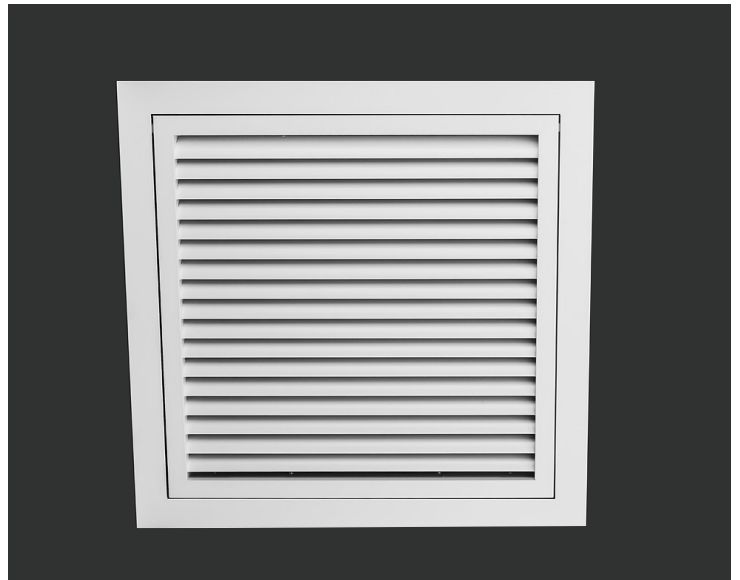
## Installation:

- Screws same color as grille
- Springs





▲ Return air removable + filter HK-FR



▲ Return air opening on hinge with clicks + filter HK-SFO



▲ Return air opening on hinge + filter HK-FO



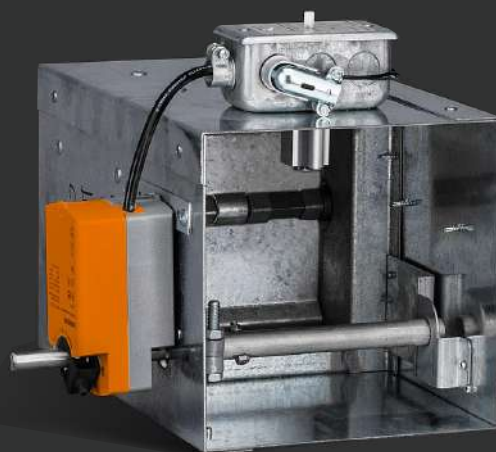
# Dampers



- ▲ Manually regulated damper DRY  
Regulating damper with internal or external motor DRM



- ▲ Regulating damper DR







- ▲ Non-return shutter SR  
Non-return damper DSR



- ◀ Fire/smoke damper

- ◀ Manually regulated geared damper DRG  
Motorized geared damper DRGM

# Jet TD

Wall mounted jet vent made from aluminum designed to deliver air in large amounts and to long distances while maintaining a low noise level. The jet core can be rotated 360°. Designed for large spaces. Air output from this shutter is very high.



## Dimensions:

• 6" 8" 10" 12" 14" 16"

## Finish:

• Painted according to RAL catalog





# Jet

## JN

Wall mounted jet vent made from aluminum designed to deliver air in large amounts and to long distances while maintaining a low noise level.

The jet core can be rotated 360°. Designed for large spaces.



**Dimensions:**

- 6" 8" 10" 12" 14" 16"

**Finish:**

- Painted according to RAL catalog









# High Ceiling HC

Round ceiling mounted vent for high ceilings over 4 m.  
Can also be used for low ceilings to deliver large and maximum air flow, with a quantity regulator mounted on the grille.  
A filter can be added to serve as return air.



**Dimensions:**

- 6" 8" 10" 12" 14" 16"

**Finish:**

- Painted according to RAL catalog



# Low Ceiling LC

Round ceiling mounted vent for low ceilings of up to 4 m.  
With air quantity regulator mounted on the grille. A filter can be added to serve as return air.



**Dimensions:**

• 6" 8" 10" 12" 14" 16"

**Finish:**

• Painted according to RAL catalog





▲ VG2 Supply

▼ OS Service Hatch



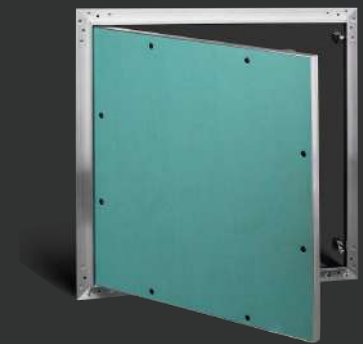
▲ VG1 Suction



▼ Hinged service hatch SO-0



▼ Drywall service hatch SO-G



▼ Removable service hatch OSR





◀ Square shutter for security room (mamad) MMR



▲ Round shutter for security room (mamad) MMO

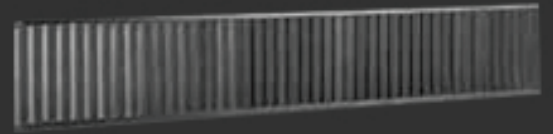


▲ Rain protection shutter NG

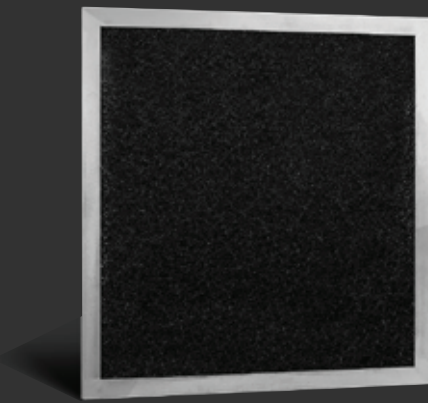


Round rain protection NGO ▶



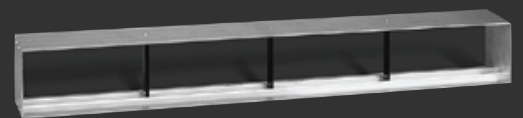


- ▲ Deflecting blades. Suited for SLOT and DECOR shutters LH. Can be ordered with deflection handle.



- ▼ Hidden frame MI. Suited for SLOT or DECOR shutters

- ▲ Fire resistant filter F



- ◀ Air quantity regulator RG



# RAL colors

Round rain protection NGO

## Leading colors:



9010

9001



1013

1015



9003

Black



9016

9006



White

RAL 1008	RAL 1001	RAL 1002	RAL 1003	RAL 1004	RAL 1005	RAL 1006	RAL 1007
RAL 1011	RAL 1012	RAL 1013	RAL 1014	RAL 1015	RAL 1016	RAL 1017	RAL 1018
RAL 1019	RAL 1020	RAL 1021	RAL 1023	RAL 1024	RAL 1026	RAL 1027	RAL 1028
RAL 1032	RAL 1033	RAL 1034	RAL 1037	RAL 2000	RAL 2001	RAL 2002	RAL 2003
RAL 2004	RAL 2005	RAL 2007	RAL 2008	RAL 2009	RAL 2010	RAL 2011	RAL 2012
RAL 3000	RAL 3001	RAL 3002	RAL 3003	RAL 3004	RAL 3005	RAL 3007	RAL 3009
RAL 3011	RAL 3012	RAL 3013	RAL 3014	RAL 3015	RAL 3016	RAL 3017	RAL 3018
RAL 3020	RAL 3022	RAL 3024	RAL 3026	RAL 3027	RAL 3031	RAL 4001	RAL 4002
RAL 4003	RAL 4004	RAL 4005	RAL 4006	RAL 4007	RAL 4008	RAL 4009	RAL 4010
RAL 5000	RAL 5001	RAL 5002	RAL 5003	RAL 5004	RAL 5005	RAL 5007	RAL 5008
RAL 5009	RAL 5010	RAL 5011	RAL 5012	RAL 5013	RAL 5014	RAL 5015	RAL 5017
RAL 5018	RAL 5019	RAL 5020	RAL 5021	RAL 5022	RAL 5023	RAL 5024	RAL 6000
RAL 6001	RAL 6002	RAL 6003	RAL 6004	RAL 6005	RAL 6006	RAL 6007	RAL 6008
RAL 6009	RAL 6010	RAL 6011	RAL 6012	RAL 6013	RAL 6014	RAL 6015	RAL 6016
RAL 6017	RAL 6018	RAL 6019	RAL 6020	RAL 6021	RAL 6022	RAL 6024	RAL 6025
RAL 6026	RAL 6027	RAL 6028	RAL 6029	RAL 6032	RAL 6033	RAL 6034	RAL 7000
RAL 7001	RAL 7002	RAL 7003	RAL 7004	RAL 7005	RAL 7006	RAL 7008	RAL 7009
RAL 7010	RAL 7011	RAL 7012	RAL 7013	RAL 7015	RAL 7016	RAL 7021	RAL 7022
RAL 7023	RAL 7024	RAL 7026	RAL 7030	RAL 7031	RAL 7032	RAL 7033	RAL 7034
RAL 7035	RAL 7036	RAL 7037	RAL 7038	RAL 7039	RAL 7040	RAL 7042	RAL 7043
RAL 7044	RAL 7045	RAL 7046	RAL 7047	RAL 8000	RAL 8001	RAL 8002	RAL 8003
RAL 8004	RAL 8007	RAL 8008	RAL 8011	RAL 8012	RAL 8014	RAL 8015	RAL 8016
RAL 8017	RAL 8019	RAL 8022	RAL 8023	RAL 8024	RAL 8025	RAL 8028	RAL 9001
RAL 9002	RAL 9003	RAL 9004	RAL 9005	RAL 9010	RAL 9011	RAL 9016	RAL 9017
RAL 9018	RAL GOLDMETAL 1336	RAL METALLIC 9022	RAL METALLIC 9023				





**ACP**  
Air conditioning products



**IN VI**

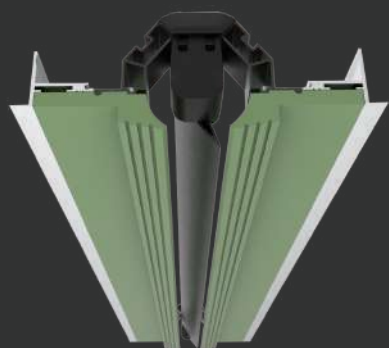
**PREMIUM  
PRODUCTS**

# Invi line 1

Linear 1-slot air vent made from MDF to prevent condensation.  
Used for air supply / exhaust.



# iSwing



- Manual
- Motorized – controlled with app

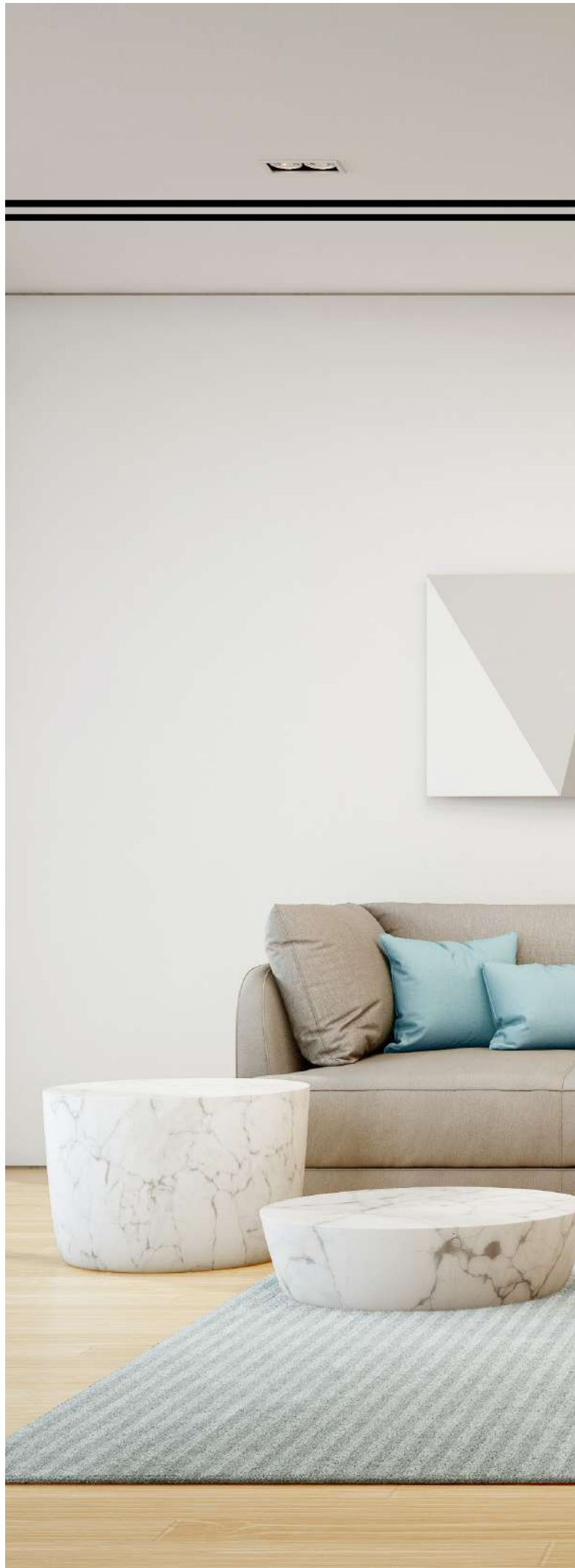
# Invi line 2



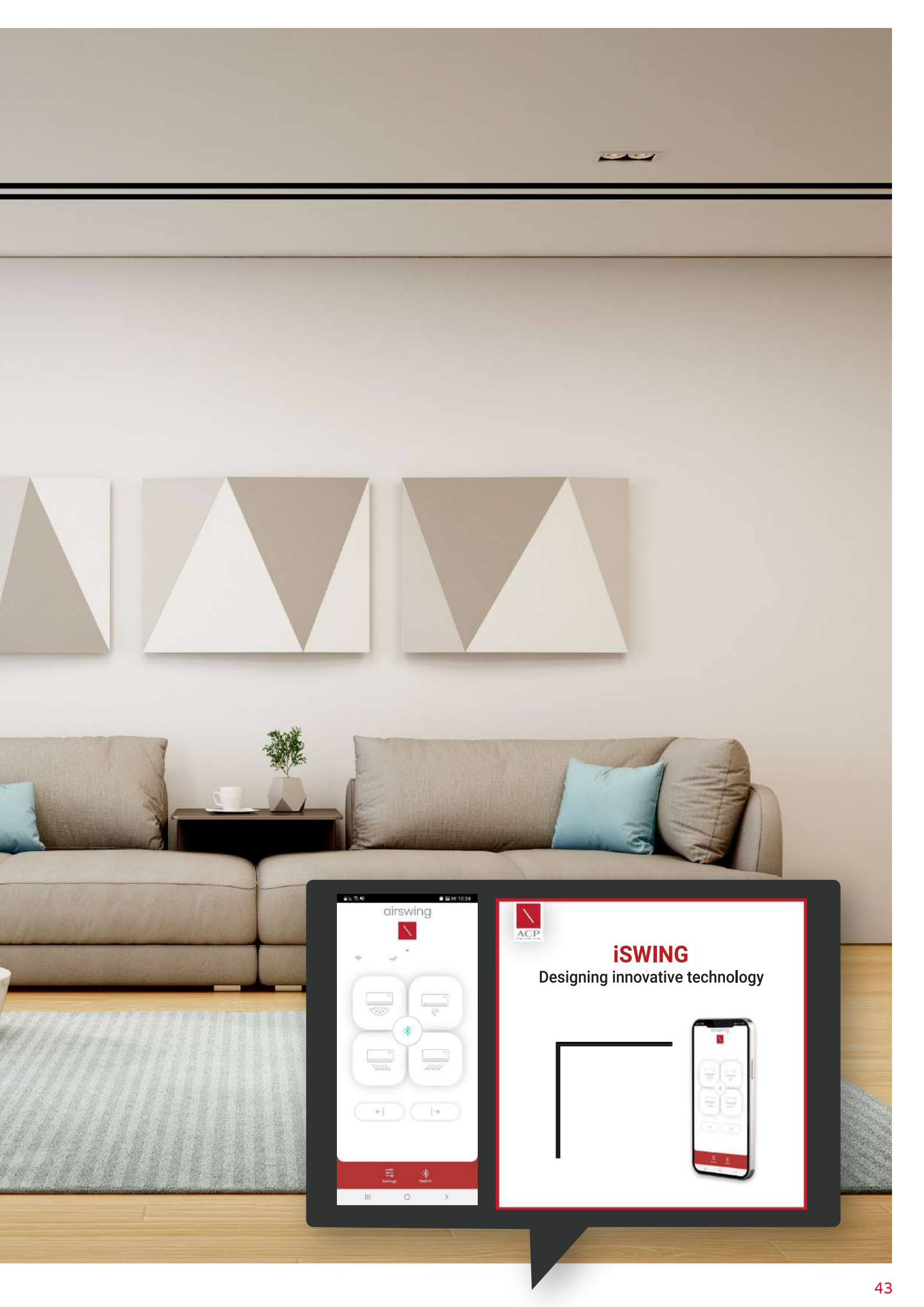
Linear 2-slot air vent made from MDF to prevent condensation.  
Used for air supply / exhaust.

## Dimensions:

- Length Can be produced upon request. made from one piece only, up to 240 cm.
- Width: slot Can be produced upon request. connection with metal strip.







airswing

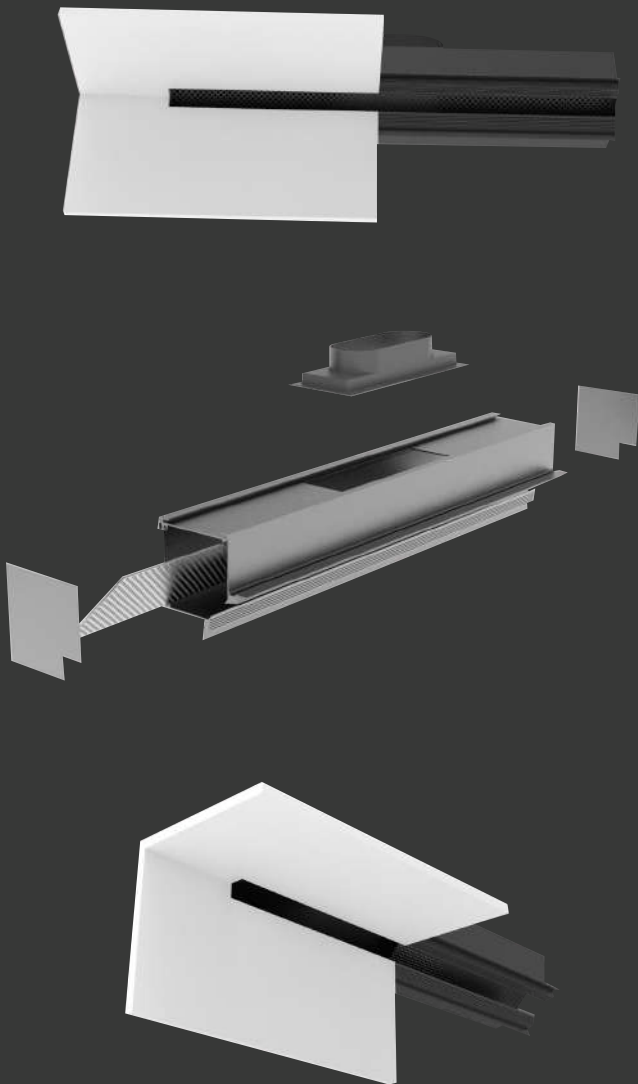
**iSWING**  
Designing innovative technology

Settings Refresh

# Invi 45°

Linear 1-slot air vent, used as a separation element between wall and ceiling.

The 45° air vent is built as a blowing box.



## Components:

- Insulation within the air vent to prevent 'sweating'
- Perforated black screen for uniform air outlet across the whole vent
- Built-in 6" threaded pipe hatch

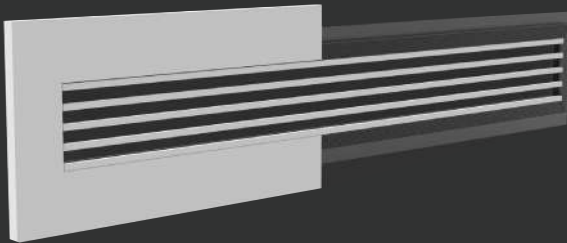






# Air Vent N.I.L.

Aluminum air vent with elements that made of plastic, rubber and magnets. Comes with deflection blades that can be regulated up to approximately 45°. The product is installed in a hidden frame with magnets for a perfect finish, flush with the drywall. Used for air supply / exhaust.



## Dimensions:

Made from one piece up to 400 cm length as required.  
Lengths over 400 cm are assembled with a press connection.

## Fixed width:

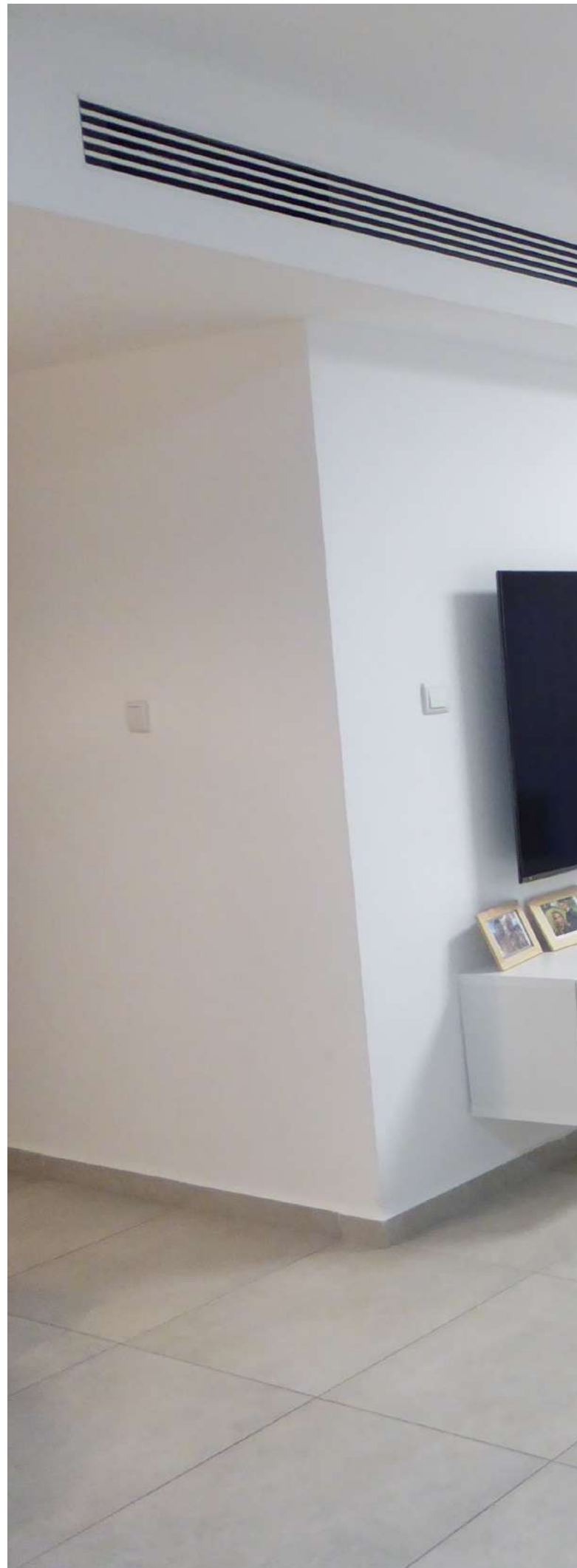
2 blades 3.1 cm	6 blades 12.4 cm
3 blades 5.5 cm	7 blades 14.7 cm
4 blades 7.8 cm	8 blades 17 cm
5 blades 10.1 cm	9 blades 19.3 cm

## Model:

- Nil + hidden frame for drywall
- Nil + hidden frame for blocks
- Nil + frame with filter
- Nil + angular with miter joint (Gehrung)
- Nil + deflection wings + silencing

## Finish:

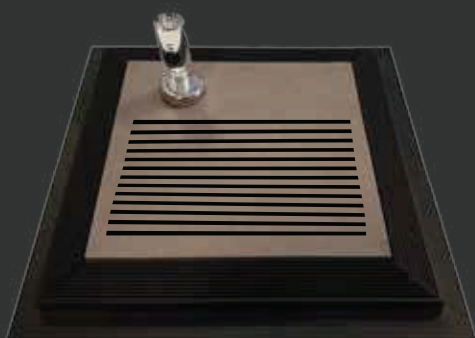
Painted according to RAL catalog







# Service Hatches N.I.L.



## Dimensions:

- Length and width as required
- Slotted service opening for air extraction

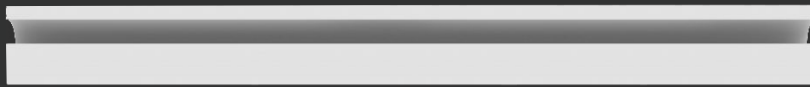






# Invi 6

Linear 1-slot air vent made from MDF and polyurethane, creating separation between wall and ceiling. Used for air supply / exhaust.



## Dimensions:

- Length: can be produced upon request
- Width: fixed 6 cm slot

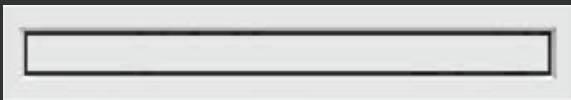




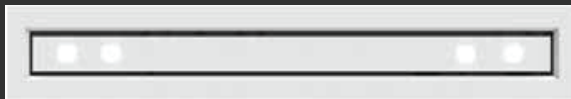
# Invi Strip

Decorative linear air vent with peripheral slot with combined spot lighting.  
Made from MDF to prevent condensation.  
With 45° regulation. Spot lighting made to order.

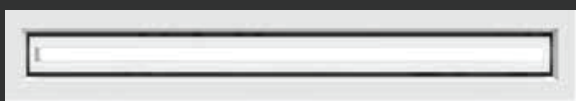
## Invi Strip



## Invi Smart Strip



## Strip Thin Smart Strip

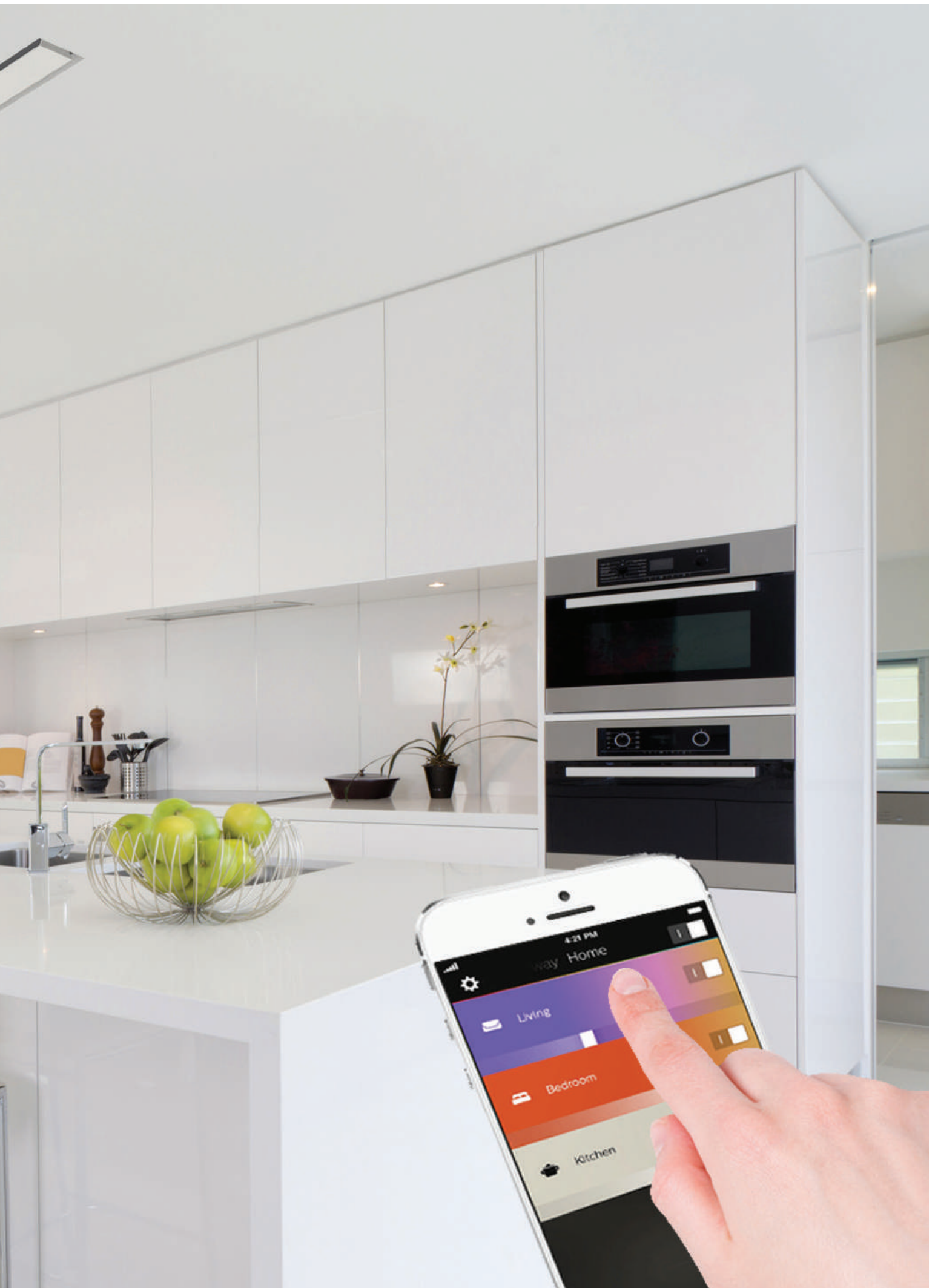


### Dimensions:

- Length: as required, fabricated from one piece only up to length of 240 cm
- Width: as required by the customer





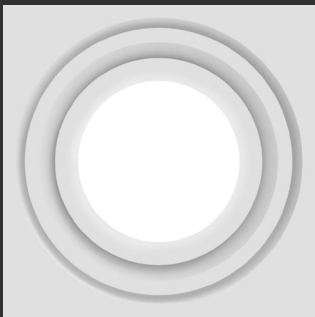




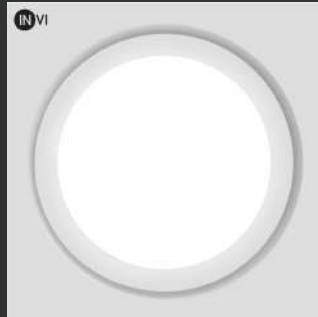
# Circle slot + lighting

Concealed round air vent with circumferential slot made from MDF. Used for air supply / exhaust. Regulation of vent 45°.

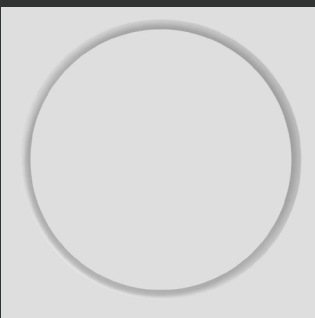
## 2-slot circle + lighting



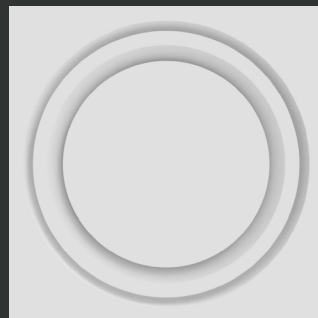
## 1-slot circle + lighting



## 1-slot circle



## 2-slot circle



### Dimensions of 2 slots:

- 105\*105 cm | outside – 60 diameter lighting
- 85\*85 cm | outside – 40 diameter lighting
- 75\*75 cm | outside – 30 diameter lighting

### Dimensions of 1 slot:

- 60\*60 cm | outside – 30 diameter lighting
- 70\*70 cm | outside – 40 diameter lighting
- 90\*90 cm | outside – 60 diameter lighting

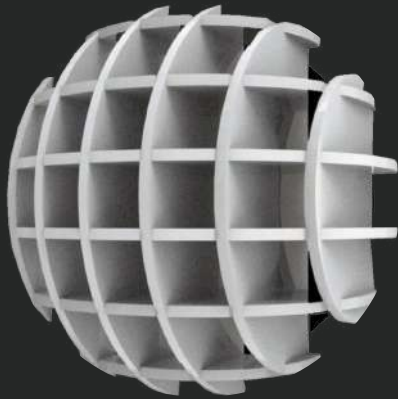
\*Also available as a tile vent





# Invi S

Concealed round air vent with circumferential slot made from MDF. Used for air supply / exhaust. Regulation of vent 45°.

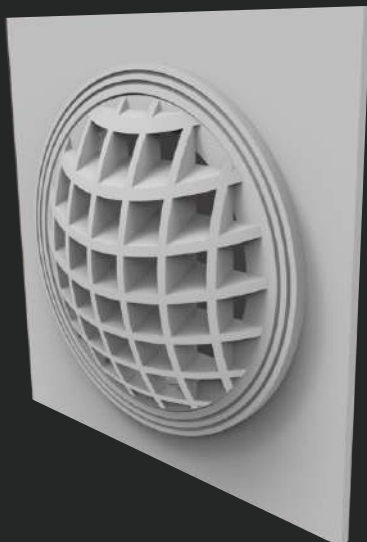


## Dimensions:

8"

10"

12"







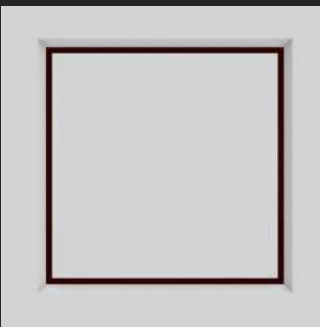
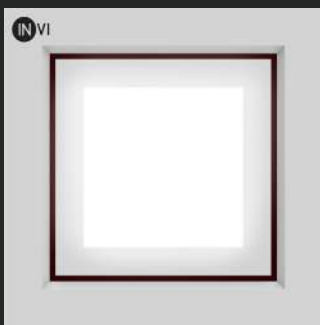


# Square 1 slot + lighting

Menstrual air diffuser - peripheral slot made of MDF material with integrated lighting.

Used to supply | air intake.

45° diffuser regulator



## Dimensions:

- 89.5 89.5  
Outside – lighting 60 cm
- 69.5 69.5 cm  
Outside – lighting 40 cm
- 59.5 59.5 cm  
Outside – lighting 30 cm

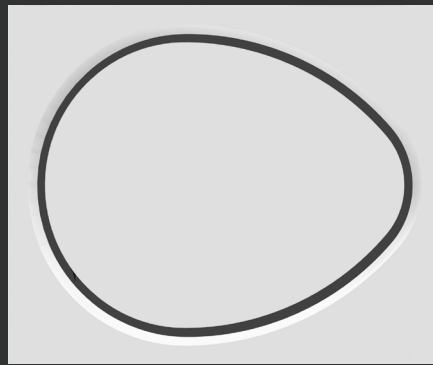
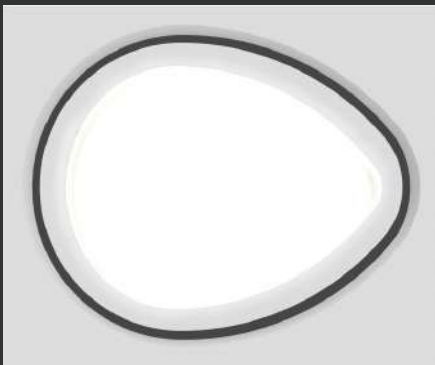




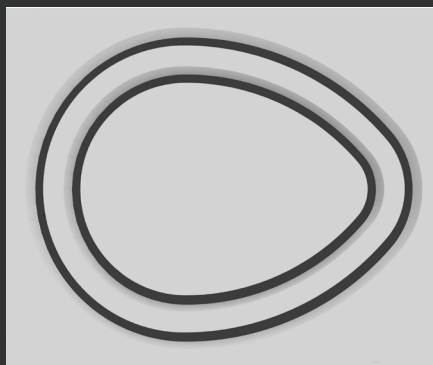
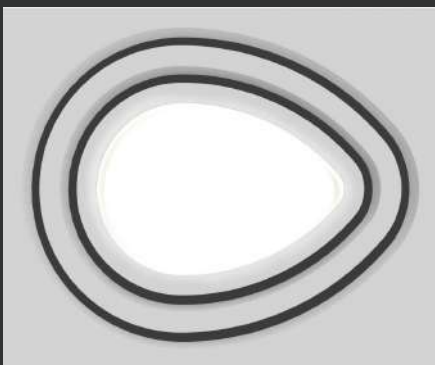
# Oval

Concealed 1-slot air vent made from MDF. Used for air supply / exhaust.  
Regulation of vent 45°.

## Oval 1 slot



## Oval 2 slots



**Dimensions:**  
60.5\*80.5 | outside







# Invi On Round

Decorative 360° aluminum air vent



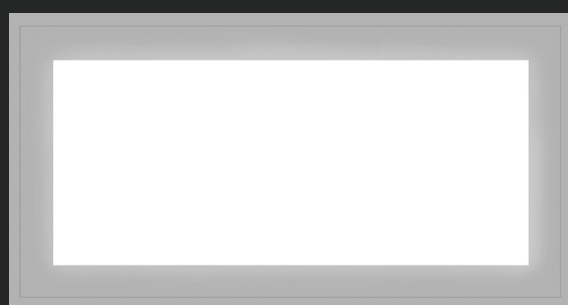
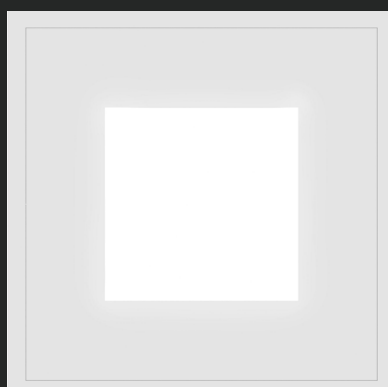
**Dimensions:**  
60.5\*80.5 | outside





# Invi Service Hatch Square / Rectangular

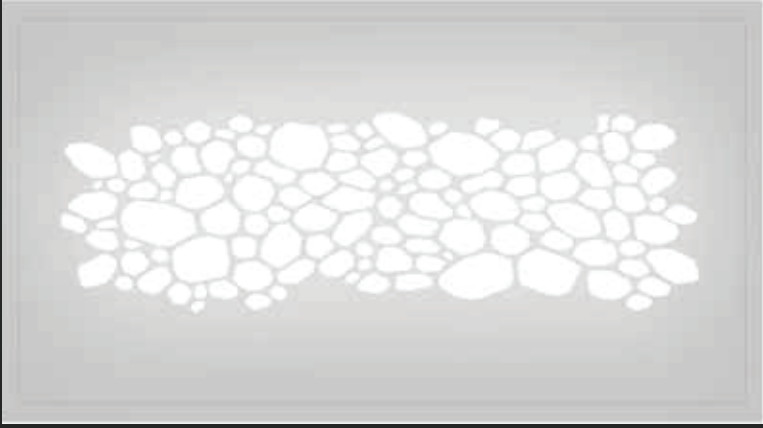
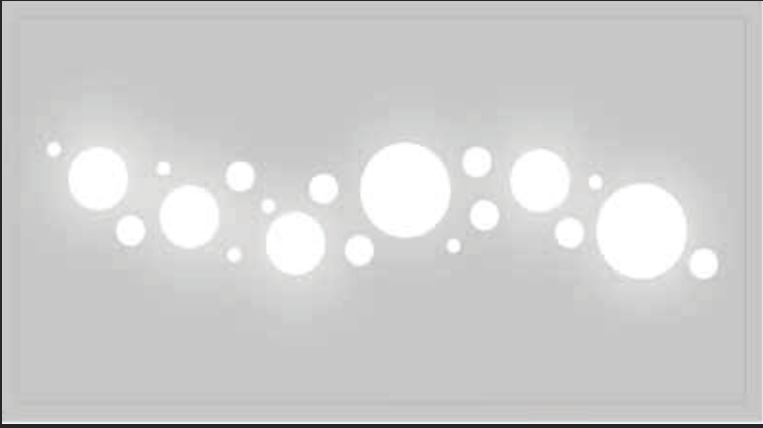
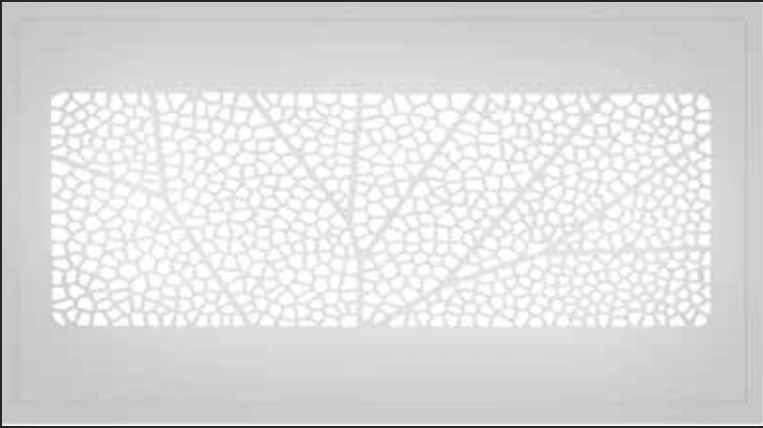
Square service hatch with infinite lighting design options –



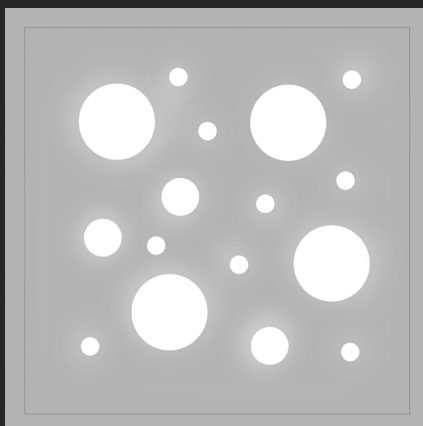
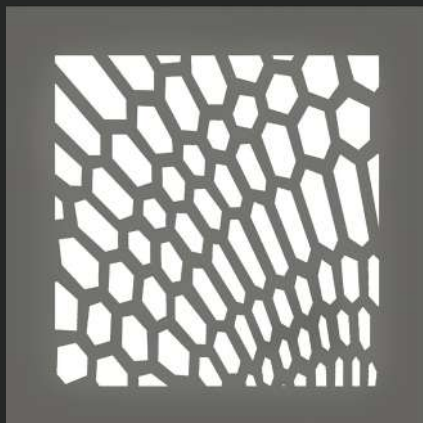




# Rectangle + Designed Lighting

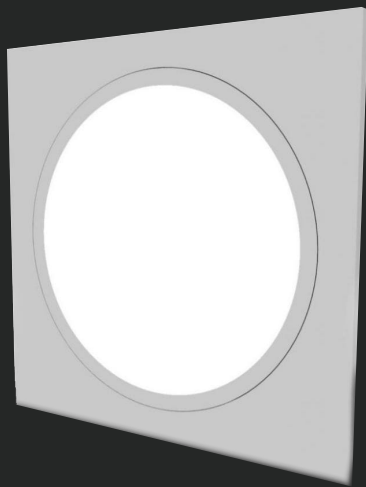


# Square + Designed Lighting

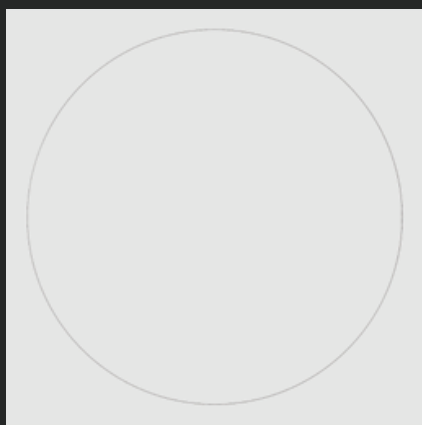


# Invi Service Hatch Square / Rectangular

Square service hatch with infinite lighting design options –



# Invi Round Service Hatch








Air Conditioning products Yesodot A.C.P LTD.  
Moshav Yesodot, Emek sorek , P.O. Box 64.

Zip Code 76810

[acp@acp-ltd.co.il](mailto:acp@acp-ltd.co.il)  (+972) 03-6871031  | (+972) 03-6874963/4   
[www.acp-ltd.co.il](http://www.acp-ltd.co.il)  | [acp\\_1965](#)  | ACP airconditioning products 