

Android TV Manager

A tailor-made solution for telcos, operators and service providers, letting you stay on top of your Android TV device fleet (including AOSP and Google TV) wherever your devices and customers are and whatever the use-case may be.

Our all-in-one cloud-based management platform, enables users to increase administrative effectiveness, reduce operational complexity, save time and money, increase customer satisfaction and reduce churn.

The platform was built bottom-up for Android and does not rely on legacy protocols such as TR69, making it the most robust platform to manage Android-based TV devices.

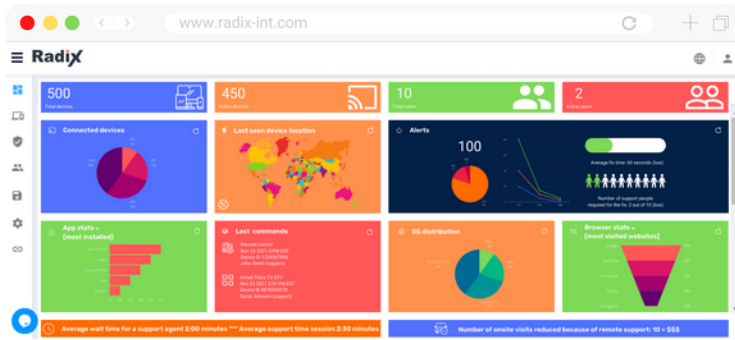
Key benefits:

- Low-level device management - from OTA firmware management to ad-hoc support
- Reduce agent time spent on support calls using remote screen control
- Easily add new features, capabilities and modules
- Reduce onsite visits with remote software updates and proactive problem resolution
- Delegate permissions to different stakeholders to allow device management by role
- Reduce subscriptions abuse
- Fast time-to-market, the service can be deployed in less than a week
- And much more!



Radix Android TV Manager is built in a modular and flexible way, enabling you to scale easier, faster and smarter!

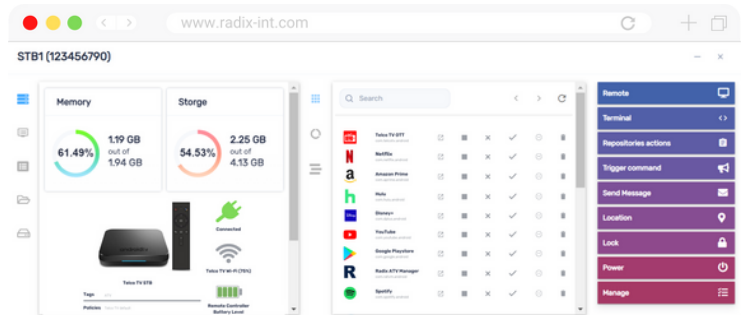
Application management:



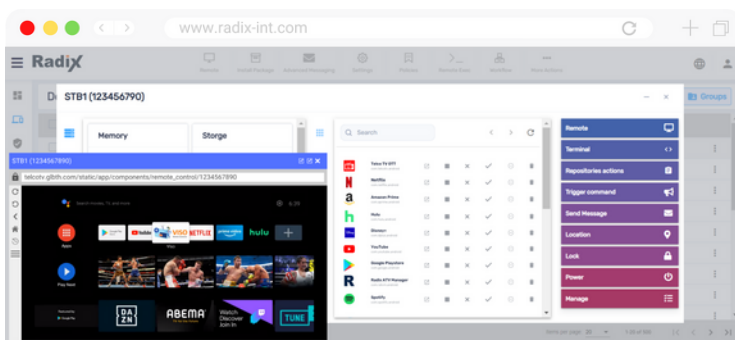
- Install/uninstall single or multiple apps
- Track and report app and data usage
- Clear apps data and history
- Block/alert on flagged apps
- Manage “Play” apps and sideloaded apps
- Non-intrusive silent operation with no human intervention no device downtime and no reboot process during updates

Device management:

- Device settings and configuration
- Create scripts and alerts
- Fleet management, work on one device, a group or the entire device fleet seamlessly
- Kiosk mode and device lockdown
- Remote messaging for adverts and alerts
- Restart/standby/wake up
- Non-intrusive silent operation with no human intervention or approval



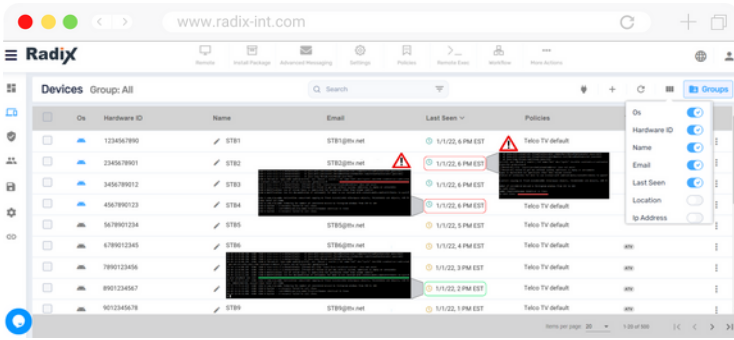
Remote support:



- Remote screen control with view and click
- Work alongside the user or take over
- Request user confirmation for support
- User-initiated support sessions
- Remote terminal access for real-time debugging
- Analyze logs in real-time
- Low-level device management in real-time



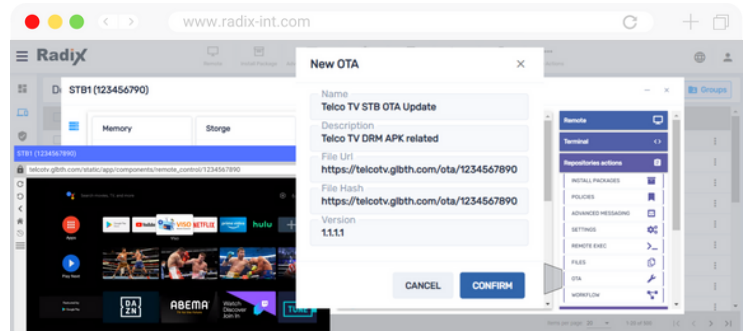
Monitoring and analysis (Telemetry):



- Real-time data collection & analytics
- Customer journey analysis
- Device-level deep log analytics
- Custom reports and alerts
- Device info such as: device ID, installed apps/versions, firmware info, network info, CPU, storage R/C battery level, etc.

OTA firmware management:

- Initiate, track and report OTA results cycle
- Triggered OTA process (device idle, time-based)
- Instant, reliable delivery (all devices/selected)
- Retry until success or TTL
- OTA file source location configuration
- A/B testing capabilities



Common functionality:

Serves all modules and includes dashboards, workflow and automation procedures, grouping and access to our API and SDK.

Partner with Radix:

SaaS turnkey solution robust and secured

Fast time-to-market (launch in days)

Modular and scalable, supporting expansion

Device model and manufacturer agnostic

Integrated into your device firmware

API and SDK for end-to-end integration

Designed bottom-up for Android TV

Tailor-made for TV operators

